



JCB LUBRICANTS | NO COMPROMISE



## JCB LUBRICANTS NO COMPROMISE.

**JCB NEVER COMPROMISES WHEN IT COMES TO THE STRENGTH AND PERFORMANCE OF ITS MACHINES. SO, WE HAVE ALSO MADE SURE THAT YOU CAN KEEP YOUR INVESTMENT OPERATING AT PEAK PERFORMANCE AND PRODUCTIVITY WITH A RANGE OF LUBRICANTS, GREASES AND ACCESSORIES DESIGNED SPECIFICALLY FOR YOU AND YOUR MACHINE.**



The comprehensive range of JCB lubricants has been approved by JCB engineers to ensure that your engine, transmission, hydraulic system and other key components receive the optimum level of protection, lengthening component life and keeping down your costs of ownership.

Industry standard approvals are also quoted to allow JCB oils to be used in other non JCB machines.

## OIL TESTING AND JCB STANDARDS

JCB oils undertake a rigorous programme of testing to ensure that they provide the maximum performance and protection for your JCB machine. JCB Engineering standards lay down performance levels and criteria that have to be met, which EXCEED OIL INDUSTRY STANDARDS.

A typical example of this is to help prevent hydraulic system contamination all JCB Hydraulic fluids are filtered down to 3 microns an extremely stringent requirement, unique to JCB.

To be sure that your lubricants adhere to the standards look out for the JCB standards approved sign:



For complete information on testing and JCB standards see the JCB lubricants videos which give details of JCB lubricants testing. In addition they show how JCB oils perform when tested against industry standard requirements and also against non JCB oils.

## CONTENTS

Hydraulic Fluid	04
Engine Oil	10
Gear Oil	16
Transmission Fluids	20
Grease	24
Ancillary Products	26
Accessories	30
Oil and Diesel Fuel Sampling	32
Paint Selector	33
The Complete Range by Part Number	34

# HYDRAULIC FLUID.

**MAINTAINING A SUPER CLEAN HYDRAULIC SYSTEM ENSURES MINIMUM DOWNTIME AND MAXIMUM EFFICIENCY. GENUINE JCB HYDRAULIC FLUIDS FEATURE HIGH QUALITY BASE OIL AND SOPHISTICATED ADDITIVES, FILTERED TO HIGHER THAN INDUSTRY STANDARD LEVELS TO ENSURE MAXIMUM COMPONENT LIFE.**

### Hydraulic fluid testing

JCB hydraulic fluids undertake a rigorous programme of testing to ensure that they provide the maximum performance and protection for your JCB machine and its hydraulic system.

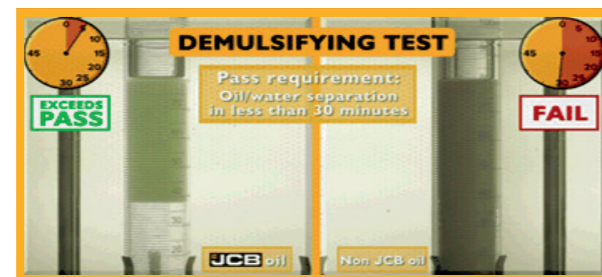
JCB Engineering standards lay down performance levels and criteria for JCB Hydraulic fluid which EXCEED OIL INDUSTRY STANDARDS. Below are examples of how JCB hydraulic fluids outperform other hydraulic fluids that claim to be the same.

### Demulsifying test:

JCB hydraulic fluid is designed to help prevent water contamination.

In the Demulsifying test the industry standard requirement is for hydraulic fluid and water to separate, at the latest, 30 minutes after being mixed together, so the water can be filtered out of the system. If water is not removed quickly from the hydraulic system it can cause:

- General reduction in the efficiency of the hydraulic fluid
- Component corrosion
- Reduction in viscosity and subsequent premature component wear
- Reduction in cooling properties within the hydraulic fluid



JCB oil separates from water in just 5 minutes! - Some low cost, poor quality oil fail to separate, even after 30 minutes. **In this test the JCB product clearly outperformed both the low cost alternative and the industry standard requirement.**

### Foam test:

This is a simple test where heat is applied to hydraulic fluid, it is designed to measure the levels of foam or air bubbles generated.

Minimising air bubbles in your hydraulic fluid caused by foam is essential as air bubbles cause cavitation which in turn can cause:

- Spongy hydraulic control response
- Heat retention (overheating) in the hydraulic fluid tank
- Poor oil flow around the hydraulic system
- Component wear, (due to an inconsistent film of oil on components)
- Ultimately premature failure



It can be clearly seen that poor quality low cost oils do not contain the same level of anti-foam additives. **In this test the JCB product clearly outperformed the low cost alternative.**



JCB STANDARD:  
4002/2800

### JCB HYDRAULIC FLUID UP 32

JCB Ultra Performance Hydraulic Fluid 32 is specifically developed for construction equipment operated under wide extremes of temperature. The product provides outstanding low (pour point of -51°C) and high temperature viscosity characteristics. JCB UP Hydraulic Fluid 32 is also a long term stable fluid with optimum anti-wear performance.

### BENEFITS

- Ultra anti-wear performance, based on ash-less anti-wear additive technology.
- Suitable arctic conditions due to outstanding low temperature viscosity.
- Long term stable fluid viscosity through excellent shear stability characteristics of the selected viscosity index improver.
- JCB UP32 surpassed the ISO 11158 HV requirements.
- An ideal cold climate hydraulic fluid.
- Ideal for JCB machines in extreme cold climate conditions.

### PERFORMANCE CLASSIFICATION

DIN 51524 PART 3 CATEGORY HVLP.  
JCB UP32 SURPASSED THE ISO 11158 HV REQUIREMENTS.

### MANUFACTURERS' STANDARDS

Swedish Defence FSD 8401. Volvo STD 1286 07. SS 155434 category AV.  
DIN 51524 Part 3 category HVLP.

Description	Pack Size	Part Number
JCB Hydraulic Fluid UP 32	20L	4002/2805
JCB Hydraulic Fluid UP 32	200L	4002/2803



JCB STANDARD:  
4002/2000

### JCB HYDRAULIC FLUID OP 46

JCB Optimum Performance Hydraulic Fluid 46 is a top quality hydraulic oil that meets the arduous demands of most off highway plant and stationary hydraulic systems exposed to wide temperature fluctuations.

In particular it protects against shearing, which is the permanent loss of viscosity due to mechanical or oxidation breakdown. It also offers excellent protection against rust, corrosion and metal fatigue, combined with "keep clean" additives to prevent clogging of filters, ensuring long life to the system's components. This hydraulic fluid may be offered to those demanding the highest quality lubricants available. Tests by JCB engineers have shown that use of this fluid can reduce fuel consumption and improve machine productivity.

### BENEFITS

- Optimum anti-wear performance throughout its service life.
- Next generation hydraulic fluid.
- Wide application temperature range (-25°C to 190°C).
- Trouble-free operation due to the unique combination of outstanding demulsibility, foam, air release, hydrolytic stability and filterability.
- Provides extremely responsive controls, particularly with servo controls.

### PERFORMANCE CLASSIFICATION

DIN 51524 PART 3 CATEGORY HVLP.

### MANUFACTURERS' STANDARDS

ISO 11158 category HV. DIN 51524 Part 3 category HVLP. SS 155434 category AV.  
Denison HF-0, HF-1, HF-2. AFNOR 48-603 category HV.

Description	Pack Size	Part Number
JCB Hydraulic Fluid OP 46	4x5L	4002/2001
JCB Hydraulic Fluid OP 46	20L	4002/2005
JCB Hydraulic Fluid OP 46	200L	4002/2003
JCB Hydraulic Fluid OP 46	1,000L - IBC	4002/2045
JCB Hydraulic Fluid OP 46	Bulk Pump off	On request



JCB STANDARD:  
4002/2700

### JCB HYDRAULIC FLUID OP 68

JCB Optimum Performance (OP) Hydraulic Fluid 68 is a quality, shear stable top tier hydraulic oil. It has been developed for off highway equipment and other hydraulic systems exposed to wide temperature fluctuations. This is a Maximum efficiency Hydraulic Fluid (MEHF).

In particular it protects against shearing, which is the permanent loss of viscosity due to mechanical or oxidation breakdown. It also offers excellent protection against rust, corrosion and metal fatigue, combined with "keep clean" additives to prevent clogging of filters, ensuring long life to the system's components. This hydraulic fluid may be offered to those demanding the highest quality lubricants available. Tests by JCB engineers have shown that use of this fluid can reduce fuel consumption and improve machine productivity.

### BENEFITS

- Optimum anti-wear performance, based on a zinc dialkyldithiophosphate additive
- Next generation hydraulic fluid.
- Wide application temperature range (-25°C to 190°C).
- Trouble-free operation due to the unique combination of outstanding demulsibility, foam, air release, hydrolytic stability and filterability.
- Provides extremely responsive controls, particularly with servo controls.

### PERFORMANCE CLASSIFICATION

DIN 51524 PART 3 CATEGORY HVLP.

### MANUFACTURERS' STANDARDS

ISO 11158 category HV. DIN 51524 Part 3 category HVLP. SS 155434 category AV.  
Denison HF-0, HF-1, HF-2. AFNOR 48-603 category HV.

Description	Pack Size	Part Number
JCB Hydraulic Fluid OP 68	4x5L	4002/2701
JCB Hydraulic Fluid OP 68	20L	4002/2705
JCB Hydraulic Fluid OP 68	200L	4002/2703
JCB Hydraulic Fluid OP 68	1,000L - IBC	4002/2745
JCB Hydraulic Fluid OP 68	Bulk Pump off	On request

# HYDRAULIC FLUID.



## JCB HYDRAULIC FLUID EP 46

A high viscosity index (VI) multigrade antiwear hydraulic fluid, which retains its multigrade properties over a wide range of applications and climatic conditions. Manufactured from the highest quality solvent refined base stocks and special additives, it will remain at specification throughout its life, giving superb performance between service intervals.

**JCB STANDARD:**  
4002/1600

### BENEFITS

- Extreme anti-wear performance, based on a zinc dialkylthiophosphate additive.
- Wide application temperature range (through outstanding low and high temperature viscosity characteristics).
- Trouble-free operation due to the unique combination of outstanding demulsibility, foam, air release, hydrolytic stability and filterability.
- Long term stable fluid viscosity through excellent shear stability characteristics of the selected viscosity index improver.
- JCB hydraulic fluid EP46 meets the requirements of most off highway equipment manufacturers.
- The zinc based additive package meets Denison HF-0, HF-1 and HF-2 requirements.

### PERFORMANCE CLASSIFICATION

DIN 51524 PART 3 CATEGORY HVLP. DIN 51502 CATEGORY HVLP.

### MANUFACTURERS' STANDARDS

ISO 11158 category HV. ISO 6743-4 category HR and HV. AFNOR 48-603 category HV. AFNOR NFE 48-690 (dry), 691 (wet). SS 155434 category MV. Vickers M-2950-s (Mobile). Vickers I-286-S. Cincinnati Milacron P-68 (ISO VG 32), P-69 (ISO VG 68) and P-70 (ISO VG 46). US Steel 126,127. Poclain Excavators ISO 46.

Description	Pack Size	Part Number
JCB Hydraulic Fluid EP 46	20L	4002/1605
JCB Hydraulic Fluid EP 46	200L	4002/1603
JCB Hydraulic Fluid EP 46	1,000L - IBC	4002/1645
JCB Hydraulic Fluid EP 46	Bulk Pump off	4002/1615



## JCB HYDRAULIC FLUID HP 15

A premium, shear stable anti wear ISO 15 mineral hydraulic fluid, formulated for good low flow characteristics at low ambient temperatures.

**JCB STANDARD:**  
4002/0500

### BENEFITS

- Extreme anti-wear performance, based on a zinc dialkylthiophosphate additive.
- Wide application temperature range (through outstanding low and high temperature viscosity characteristics).
- Trouble-free operation due to the unique combination of outstanding demulsibility, foam, air release, hydrolytic stability and filterability.
- Long term stable fluid viscosity through excellent shear stability characteristics of the selected viscosity index improver.
- JCB HP 15 Hydraulic fluid meets the requirements of most off highway equipment manufacturers.

### PERFORMANCE CLASSIFICATION

DIN 51524 PART 3 CATEGORY HVLP. DIN 51502 CATEGORY HVLP.

### MANUFACTURERS' STANDARDS

ISO 11158 category HV. ISO 6743-4 category HR and HV. AFNOR 48-603 category HV. AFNOR NFE 48-690 (dry), 691 (wet). SS 155434 category MV. Vickers M-2950-s (Mobile). Vickers I-286-S. Cincinnati Milacron P-68 (ISO VG 32), P-69 (ISO VG 68) and P-70 (ISO VG 46). US Steel 126, 127. Poclain Excavators ISO 46.

Description	Pack Size	Part Number
JCB Hydraulic Fluid HP 15	12x1L	4002/0501
JCB Hydraulic Fluid HP 15	4x5L	4002/0503



## JCB HYDRAULIC FLUID HP 32

A high quality hydraulic fluid, based on the latest low zinc technology, combining anti-wear performance with excellent filterability in both wet and dry conditions.

Specially formulated from solvent refined base oil, containing a superior additive package, which not only provides outstanding performance but also reduces pump, motor and valve wear. JCB Hydraulic Fluid HP 32 provides excellent protection against corrosion and metal fatigue, combined with superb filterability characteristics ensuring long service life.

**JCB STANDARD:**  
4002/1000

### BENEFITS

- High anti-wear hydraulic performance, based on a zincdialkylthiophosphate additive technology.
- Lasts throughout its prescribed service life (due to high thermal and oxidation stability for high temperature applications).
- Trouble-free operation due to the unique combination of outstanding demulsibility, foam, air release, hydrolytic stability and filterability characteristics.
- Can also be applied in other industrial equipment such as screw-air compressors and not severely loaded gears.

### PERFORMANCE CLASSIFICATION

DIN 51524 PART 2 CATEGORY HLP. DIN 51502 CATEGORY HLP.

### MANUFACTURERS' STANDARDS

ISO 11158 category HM. ISO 6743-4 category HM. SS 155434 category AM (not ISO VG 100). DIN 51524 Part 2 category HLP. DIN 51502 category HLP. MAG IAS P-68 (ISO VG 32), P-69 (ISO VG 68) and P-70 (ISO VG 46). Denison HF-O, HF-1 & HF-2. AFNOR 48-603 category HM. Eaton Brochure 03-401-2010.

Description	Pack Size	Part Number
JCB Hydraulic Fluid HP 32	4x5L	4002/1001
JCB Hydraulic Fluid HP 32	20L	4002/1025
JCB Hydraulic Fluid HP 32	200L	4002/1024
JCB Hydraulic Fluid HP 32	1,000L - IBC	4002/1045
JCB Hydraulic Fluid HP 32	Bulk Pump off	4002/1015



## JCB HYDRAULIC FLUID HP 46

A top quality hydraulic fluid based on the latest low zinc technology, combining anti-wear performance with excellent filterability in both wet and dry conditions.

Specially formulated from solvent refined base oil, containing a superior additive package, which not only provides outstanding performance but also reduces pump, motor and valve wear. JCB Hydraulic Fluid HP 46 provides excellent protection against corrosion and metal fatigue, combined with superb filterability characteristics ensuring quality throughout service life.

**JCB STANDARD:**  
4002/0800

### BENEFITS

- High anti-wear performance, based on a zincdialkylthiophosphate additive technology.
- Lasts throughout its prescribed service life (due to high thermal and oxidation stability for high temperature applications).
- Suitable for use in both JCB and non-JCB machines.
- Trouble-free operation due to the unique combination of outstanding demulsibility, foam, air release, hydrolytic stability and filterability characteristics.
- Can also be applied in other industrial equipment such as screw-air compressors and not severely loaded gears.

### PERFORMANCE CLASSIFICATION

DIN 51524 PART 2 CATEGORY HLP. DIN 51502 CATEGORY HLP.

### MANUFACTURERS' STANDARDS

ISO 11158, category HM. ISO 6743-4 category HM. SS 155434 category AM (not ISO VG 100). DIN 51524 Part 2 category HLP. DIN 51502 category HLP. MAG IAS P-68 (ISO VG 32), P-69 (ISO VG 68) and P-70 (ISO VG 46). Denison HF-O, HF-1 & HF-2. AFNOR 48-603, category HM. Eaton Brochure 03-401-2010

Description	Pack Size	Part Number
JCB Hydraulic Fluid HP 46	4x5L	4002/0801
JCB Hydraulic Fluid HP 46	20L	4002/0805
JCB Hydraulic Fluid HP 46	200L	4002/0803
JCB Hydraulic Fluid HP 46	1,000L - IBC	4002/0845
JCB Hydraulic Fluid HP 46	Bulk Pump off	4002/0815



## JCB HYDRAULIC FLUID HP 68

A top quality anti-wear hydraulic oil, specially designed to meet the stringent filterability requirements of modern tools and electro-hydraulic systems, for use in machines where accurate indexing, positioning and sequencing depends on oil quality. Manufactured from the highest quality solvent refined base stocks and special additives. The formulation is based on the latest low-zinc technology, combining high anti-wear performance with excellent filterability in both wet and dry conditions. It is fully inhibited to keep systems free of corrosion and sludging and is highly resistant to foaming.

**JCB STANDARD:**  
4002/0700

### BENEFITS

- High anti-wear hydraulic performance, based on a zincdialkylthiophosphate additive technology.
- Lasts throughout its prescribed service life (due to high thermal and oxidation stability for high temperature applications).
- Suitable for use in JCB and many non-JCB machines.
- Trouble-free operation due to the unique combination of outstanding demulsibility, foam, air release, hydrolytic stability and filterability characteristics.
- Can also be applied in other industrial equipment such as screw-air compressors and not severely loaded gears.

### PERFORMANCE CLASSIFICATION

DIN 51524 PART 2 CATEGORY HLP. DIN 51502 CATEGORY HLP.

### MANUFACTURERS' STANDARDS

ISO 11158 category HM. ISO 6743-4 category HM. SS 155434 category AM (not ISO VG 100). DIN 51524 Part 2, category HLP. DIN 51502 category HLP. MAG IAS P-68 (ISO VG 32), P-69 (ISO VG 68) and P-70 (ISO VG 46). Denison HF-O, HF-1 & HF-2. AFNOR 48-603 category HM. Eaton Brochure 03-401-2010.

Description	Pack Size	Part Number
JCB Hydraulic Fluid HP 68	20L	4002/0705
JCB Hydraulic Fluid HP 68	200L	4002/0701



## JCB HYDRAULIC FLUID BIODEGRADABLE 46

This oil is suitable for most types of hydraulic plant and equipment, where leaks or accidental spillage could result in the contamination of soil, water or ground water. It is also compatible with all previous JCB Biodegradable Hydraulic Oil offerings. Typical uses include: mobile plant associated with forestry, water management, inland waterways, dockyards, agriculture, construction, quarrying, refuse collection, landfill, water treatment, road building, railroads and mining.

**JCB STANDARD:**  
4002/2600

It is a non mineral, ecologically acceptable hydraulic fluid (EAHF) based on Synthetic Ester technology, which ensures equal high temperature and anti-wear performance to that of conventional mineral hydraulic oils. It meets the requirements of VDMA (draft DIN for EAHF) HEES 46 and is 100% Biodegradable under the CEC L-33-T-82 method.

### BENEFITS

- High degree of biodegradability.
- Reduces risks to the aquatic environment.
- Does not induce long term effects to the aquatic environment.
- Mineral oil free, special additive packs.
- Wide application temperature range due to low pour point and high viscosity index.
- Compatible with mineral and rapeseed oils.
- Lasts throughout its prescribed service life due to high oxidation stability.

### PERFORMANCE CLASSIFICATION

DIN 51524 PART 2 CATEGORY HLP. DIN 51502 CATEGORY HLP.

### MANUFACTURERS' STANDARDS

ISO 11158 category HV (except oxidation stability D 943). DIN 51524 Part 3 category HVLP (except oxidation stability D 943). Draft DIN specification for HE type fluids. ISO 15380, HEES type. SS 155434 category BV. VDMA 24586. Denison HF-2 and HF-6. Bosch Rexroth (HEES type).

Description	Pack Size	Part Number
JCB Hydraulic Fluid Biodegradable 46	20L	4002/2605
JCB Hydraulic Fluid Biodegradable 46	200L	4002/2603
JCB Hydraulic Fluid Biodegradable 46	1,000L - IBC	4002/2645
JCB Hydraulic Fluid Biodegradable 46	Bulk Pump off	On request

# 100% RECYCLED PLASTIC PACKAGING - UNIQUE TO JCB.

JCB IS PROUD TO BE AT THE FOREFRONT OF THE DEVELOPMENT OF 100% RECYCLED PLASTIC 20L PAILS AND 5L CANS – AN INDUSTRY FIRST AND UNIQUE TO JCB.

- All JCB 20L and 5L oil packs are manufactured from 100% recycled plastic that would have otherwise gone to landfill
- The JCB pack contains all the benefits of a conventional plastic drum, however, it is manufactured from recycled plastic!
- Much of the recycled plastic has been sourced from plastic waste from automotive manufacture
- If correctly washed and cleansed the drum can be re-used again in oil and other applications
- Fully waterproof, it can be left outside in damp wet conditions
- Less than the 20kg manual handling limit when full
- Drum pump available which screws directly into the pack – part number: 990/89707



## ENGINE OIL.

**YOU CAN BE SURE OF THE PERFORMANCE AND CONFIDENT OF THE PROTECTION OFFERED BY JCB ENGINE OILS. THE HIGH QUALITY BASE OILS AND CAREFULLY SELECTED ADDITIVES ENSURE JCB ENGINE OILS EXCEED ALL INTERNATIONAL SPECIFICATIONS.**

**Choosing anything else but the approved JCB oil is a false economy which can lead to inefficient machine operation, component wear and ultimately premature component failure.**

**Engine oil testing**

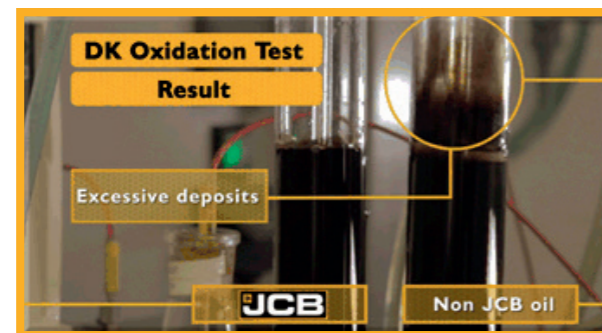
JCB engine oils undertake a rigorous programme of testing to ensure that they provide the maximum performance and protection for your JCB machine and its engine.

JCB Engineering standards lay down performance levels and criteria for JCB Engine oil which EXCEED OIL INDUSTRY STANDARDS. The DK Oxidation Test is a typical example of how JCB engine oil outperforms other engine oils that claim to be the same.

**DK Oxidation test:**

JCB Engine oil is blended to ensure that the oil continues to provide efficient lubrication throughout its designated service interval life. Some poor quality, low cost oils begin to breakdown leading to excessive deposits which cause reduced lubrication and subsequently increased wear.

The DK Oxidation test is an industry standard test and shows how oxidation can form within engine oil. The below is after 192 hours and shows excessive deposits forming with poor quality low cost engine oil, while there are no deposits from the JCB oil.



**In this test the JCB product clearly outperformed both the low cost alternative and the industry standard requirement.**



**JCB STANDARD:  
4001/2900**

**JCB ENGINE OIL UP 15W40**

JCB UP 15W40 is aimed at Tier 4i/Stage IIIB and T4 Final Diesel engines that utilise DOC (Diesel oxidation catalyst), DPF (Diesel particulate filter) and SCR (Selective catalytic reduction) aftertreatment technology to meet emissions legislation.

JCB UP15W40 is an Ultra High Performance Diesel Engine Lubricant with Medium Sulphated Ash, Phosphorus and Sulphur content (Mid SAPS) and is also designed for the lubrication of the latest high performance USA EPA 2007 and EURO 5 diesel engines, in particular where these engines are equipped with after treatment systems (such as DOC, DPF & SCR) operating on low sulphur diesel fuel (50 ppm or below) and under severe heavy duty conditions.

**BENEFITS**

- A Tier 4i and Tier 4F engine oil.
- Specially developed formulation for ACEA E9 and API CJ-4 applications.
- Minimises diesel particulate filter (DPF/CRT) plugging.
- Protects catalytic after treatment systems (SCR).
- Excellent protection against bore polishing and cam wear.
- Provides quick lubrication after cold starting thus limiting engine wear.
- Prevents engine fouling due to combustion soot.

**PERFORMANCE CLASSIFICATION**

API CJ-4 / API SM. ACEA E9.

**MANUFACTURERS' STANDARDS**

Volvo VDS-4. Renault RLD-3. MB 228.31. MAN 3575. MAN 3275. MTU Type 2.1. Deutz DQC III-05. Cat ECF-3/ECF-2/ECF-1a. Mack EOM - Premium Plus. Cummins CES 20081. DDC 93K218.

Description	Pack Size	Part Number
JCB Engine Oil UP 15W40	4x5L	4001/2901
JCB Engine Oil UP 15W40	20L	4001/2905
JCB Engine Oil UP 15W40	200L	4001/2903
JCB Engine Oil UP 15W40	1,000L - IBC	4001/2945
JCB Engine Oil UP 15W40	Bulk Pump off	On request



**JCB STANDARD:  
4001/3000**

**JCB ENGINE OIL UP 10W30**

JCB Engine Oil UP 10W-30 is an Ultra High Performance Diesel Engine Lubricant with Medium Sulphated Ash, Phosphorus and Sulphur content (Mid SAPS) designed for the lubrication of the latest USA EPA 2007 and EURO 5 diesel engines.

It is a low viscosity SAE 10W-30 grade which offers fuel economy improvement.

**BENEFITS**

- A Tier 4i and Tier 4F engine oil.
- Specially developed formulation for ACEA E9 and API CJ-4 applications.
- Minimises diesel particulate filter (DPF/CRT) plugging.
- Protects catalytic after treatment systems (SCR).
- Excellent protection against bore polishing and cam wear.
- Provides quick lubrication after cold starting thus limiting engine wear.
- Prevents engine fouling due to combustion soot.

**PERFORMANCE CLASSIFICATION**

API CJ-4 / API SM / API CF. ACEA E9.

**MANUFACTURERS' STANDARDS**

Volvo VDS-4. Renault RLD-3. MB 228.31. MAN 3575. MAN 3275. MTU Type 2.1. Cat ECF-3/ECF-2. Cummins CES 20081. JASO DH-2.

Description	Pack Size	Part Number
JCB Engine Oil UP 10W30	4x5L	4001/3001
JCB Engine Oil UP 10W30	20L	4001/3005
JCB Engine Oil UP 10W30	200L	4001/3003
JCB Engine Oil UP 10W30	1,000L - IBC	4001/3045
JCB Engine Oil UP 10W30	Bulk Pump off	On request



**JCB STANDARD:  
4001/3100**

**JCB ENGINE OIL UP 5W30**

JCB UP 5W30 is a ultra high performance synthetic heavy duty engine oil with low sulphated ash, phosphorus and sulphur content (low SAPS) designed for lubrication of Euro IV, Euro V and Euro VI diesel engines giving excellent cold starting properties and fuel economy benefits.

This product is ideal for all Euro IV, Euro V and Euro VI diesel engines equipped with a diesel particulate filter (DPF) or catalytic after treatment systems (such as SCR) operating on low sulphur diesel fuel (50 ppm or below) and under severe heavy duty conditions. In addition it possesses excellent cold starting properties.

**BENEFITS**

- Product specially developed to cover ACEA E6, ACEA E7 and ACEA E9 applications.
- Provides enhanced durability reducing wear and corrosion.
- Low Viscosity SAE 5W-30 grade saves fuel consumption during warming-up phase and operating conditions.
- Minimises diesel particulate filter (DPF/CRT) plugging.
- Protects catalytic after treatment systems (SCR).
- Excellent cold starting properties due to low pour point.
- Excellent protection against bore polishing and cam wear.
- Provides quick lubrication after cold starting thus limiting engine wear.
- Prevents engine fouling due to combustion soot.

**PERFORMANCE CLASSIFICATION**

API CJ-4 / SN. ACEA E6, E7, E9.

**MANUFACTURERS' STANDARDS**

MB 228.31 / 228.51. MAN 3477. MTU Type 3.1. Volvo VDS-4 / CNG. Renault RXD / RLD-2 / RLD-3. Deutz DQC IV-10 LA. Mack EO-M Plus / EO-N Premium Plus. Mack EO-O Premium Plus. Cummins CES 20081. Caterpillar ECF-3. JASO DH-2.

Description	Pack Size	Part Number
JCB Engine Oil UP 5W30	4x5L	4001/3101
JCB Engine Oil UP 5W30	20L	4001/3105
JCB Engine Oil UP 5W30	200L	4001/3103
JCB Engine Oil UP 5W30	1,000L - IBC	4001/3145
JCB Engine Oil UP 5W30	Bulk Pump off	On request



**JCB STANDARD:  
4001/2800**

**JCB ENGINE OIL OP 15W40**

JCB Optimum Performance Engine Oil 15W40 is a super high performance diesel engine lubricant designed for the lubrication of low emission Euro 4 engines and Euro 3 engines. It can be used in all high performance four stroke diesel engines operating on low sulphur diesel fuel (<0.05% mass) and under severe heavy duty conditions.

The diesel engines may be normally aspirated, turbocharged or supercharged, with or without intercooling and fitted in commercial vehicles or off-highway equipment. It is also suitable for application in passenger cars with petrol or diesel engines. This oil meets API CI-4 specification.

**BENEFITS**

- Product specially developed to cover ACEA E6, ACEA E7 and ACEA E9 applications.
- Provides enhanced durability reducing wear and corrosion.
- Low Viscosity SAE 5W-30 grade saves fuel consumption during warming-up phase and operating conditions.
- Minimises diesel particulate filter (DPF/CRT) plugging.
- Protects catalytic after treatment systems (SCR).
- Excellent cold starting properties due to low pour point.
- Excellent protection against bore polishing and cam wear.
- Provides quick lubrication after cold starting thus limiting engine wear.
- Prevents engine fouling due to combustion soot.

**PERFORMANCE CLASSIFICATION**

API CI-4 / SL. ACEA E7, E5, E3, B4, B3, A3.

**MANUFACTURERS' STANDARDS**

MAN M3275. MB 228.3. Volvo VDS-3. MTU Type 2. Mack EO-N. Cummins CES 20071, -72, -76, -77. World-wide DHD-1. Caterpillar ECF-1 & ECF-2. Renault VI RLD & RLD-2. ZF TE-ML 04C, 07C. Exceeds requirements of DAF, IVECO and Scania.

Description	Pack Size	Part Number
JCB Engine Oil OP 15W40	4x5L	4001/2801
JCB Engine Oil OP 15W40	20L	4001/2805
JCB Engine Oil OP 15W40	200L	4001/2803
JCB Engine Oil OP 15W40	1,000L - IBC	4001/2845
JCB Engine Oil OP 15W40	Bulk Pump off	On request

## ENGINE OIL.

**JCB ENGINE OIL EP 15W40**

An advanced, high specification engine oil, suitable for use in on and off highway and in commercial vehicle applications, including those meeting Euro 3 exhaust emission regulations.

Its outstanding protection for naturally aspirated, turbocharged and supercharged engines makes it the ideal choice for both single and mixed fleet operations.

**JCB STANDARD:**  
4001/1800

**BENEFITS**

- Ideal for Tier 2 and Tier 3 JCB Dieselmex engines.
- An excellent value for money multi-purpose engine oil.
- Excellent protection against bore polishing and cam wear.
- Protects engine against corrosive wear in off-the-road applications.
- Provides quick lubrication after cold starting thus limiting engine wear.
- Prevents engine fouling due to combustion soot (problematic to EGR).
- Performance quality allows wide application from cars to trucks.
- Multi-purpose oil allows product range rationalisation.

**PERFORMANCE CLASSIFICATION**

API CH-4 / SJ. ACEA E5, E3, B3, A3.

**MANUFACTURERS' STANDARDS**

MAN M3275. MB 228.3. Volvo VDS-2. MTU Type 2. Mack EO-M Plus. Caterpillar ECF-1. Cummins CES 20071, -72, -76, -77. Recommended for Renault VI RLD. Exceeds requirements of DAF, IVECO and Scania.

Description	Pack Size	Part Number
JCB Engine Oil EP 15W40	4x5L	4001/1801
JCB Engine Oil EP 15W40	20L	4001/1805
JCB Engine Oil EP 15W40	200L	4001/1803
JCB Engine Oil EP 15W40	1,000L - IBC	4001/1845
JCB Engine Oil EP 15W40	Bulk Pump off	4001/1815

**JCB ENGINE OIL EP 5W40**

JCB Engine Oil EP 5W40 has been specifically introduced to offer the most cost effective, extreme performance engine oil possible for JCB Ecomax T4i engine. It also provides cold climate protection for the Dieselmex T3 engine where required.

This product is an extreme performance synthetic diesel engine lubricant which is specially formulated to offer superior cold start properties. With a pour point of -30°C it is an ideal choice for off-highway equipment operating in low temperature conditions below -10°C. In addition it offers protection against corrosion and rust and the increased wear found in cold start conditions.

**JCB STANDARD:**  
4001/2700

**BENEFITS**

- **Designed and produced specifically for the JCB Ecomax T3 & T4i engines.**
- Synthetic Extreme Performance engine lubricant offers superior cold start properties.
- Superior turbocharger lubrication and protection.
- Synthetic formulation offering improved engine cleanliness.
- Protects against cam wear.
- Provides good lubrication after cold starting thus limiting engine wear.
- Prohibits corrosion and helps protect against rust.
- Reduces handling and storage costs (one oil for many applications).

**PERFORMANCE CLASSIFICATION**

API CH-4 / CG-4 / CF-4 / CF / SJ. ACEA E2, B3, A3.

**MANUFACTURERS' STANDARDS**

JCB Standard: 4001/2700. Designed and produced specifically for the JCB Ecomax T3 & T4i engines.

Description	Pack Size	Part Number
JCB Engine Oil EP 5W40	4x5L	4001/2701
JCB Engine Oil EP 5W40	20L	4001/2705
JCB Engine Oil EP 5W40	200L	4001/2703
JCB Engine Oil EP 5W40	1,000L - IBC	4001/2745
JCB Engine Oil EP 5W40	Bulk Pump off	4001/2715

**JCB ENGINE OIL HP 15W40**

JCB HP 15W40 is a universal mixed fleet engine lubricant and is used in high performance four stroke diesel engines, normally aspirated as well as turbocharged or supercharged, operating under moderate to heavy duty condition.

JCB HP 15W40 is used as engine lubricant in off highway/ construction applications, commercial vehicles, buses or military equipment, when one or more of the following specifications below are used to describe the required lubricant quality.

**JCB STANDARD:**  
4001/1500

**BENEFITS**

- An excellent value for money multi-purpose engine oil.
- Ideal universal mixed fleet engine lubricant.
- Universal engine/transmission lubricants for buses and off-highway or military equipment.
- Reduces handling and storage costs (one oil for many applications).
- Helps protect against cam wear.
- Provides good lubrication after cold starting thus limiting engine wear.
- Prohibits corrosion and helps protect against rust.

**PERFORMANCE CLASSIFICATION**

API CF-4 / CF / SG. ACEA A2, B2, E2.

**MANUFACTURERS' STANDARDS**

MIL-L-46152E. MIL-L-2104E. MAN 271 (diesel engines, normal drain). Mercedes-Benz page 228.1 and 229.1 (diesel and gasoline engines). Volkswagen TL-VW 501.01, 505.00. Volvo VDS (Diesel engines). Scania Diesel engines. RVI SHPD (Heavy Duty Diesel Engines) E2-R. Ford ESE-M2C153-E (service fill SG/CD). General Motors GM 6094M (service fill SG/CD). Allison C-4 (automatic transmissions). Caterpillar TO-2 (transmissions). Voith selected transmissions. ZF TE-ML 04C, 07.

Description	Pack Size	Part Number
JCB Engine Oil HP 15W40	4x5L	4001/1501
JCB Engine Oil HP 15W40	20L	4001/1505
JCB Engine Oil HP 15W40	200L	4001/1503
JCB Engine Oil HP 15W40	1,000L - IBC	4001/1545
JCB Engine Oil HP 15W40	Bulk Pump off	4001/1515

**JCB ENGINE OIL HP 10W30**

JCB HP 10W30 is a universal mixed fleet engine lubricant and is used in high performance four stroke diesel engines, normally aspirated as well as turbocharged or supercharged, operating under moderate to heavy duty condition.

JCB HP 10W30 is used as engine lubricant in off highway/ construction applications, commercial vehicles, buses or military equipment, when one or more of the following specifications below are used to describe the required lubricant quality.

**JCB STANDARD:**  
4001/1700

**BENEFITS**

- An excellent value for money multi-purpose engine oil.
- Ideal universal mixed fleet engine lubricant.
- Universal engine/transmission lubricants for buses and off-highway or military equipment.
- Reduces handling and storage costs (one oil for many applications).
- Helps protect against cam wear.
- Provides superior lubrication after cold starting thus limiting engine wear.
- Prohibits corrosion and helps protect against rust.

**PERFORMANCE CLASSIFICATION**

API CH-4 / CG-4 / SJ / CF. ACEA A2, B2, E2.

**MANUFACTURERS' STANDARDS**

Mack EO-L Plus. Cummins CES 20076. Cat ECF-1.

Description	Pack Size	Part Number
JCB Engine Oil HP 10W30	4x5L	4001/1701
JCB Engine Oil HP 10W30	20L	4001/1705
JCB Engine Oil HP 10W30	200L	4001/1703
JCB Engine Oil HP 10W30	1,000L - IBC	4001/1745
JCB Engine Oil HP 10W30	Bulk Pump off	On request

**JCB ENGINE OIL HP 20W50**

JCB HP 20W50 is a universal mixed fleet engine lubricant and is used in high performance four stroke diesel engines, normally aspirated as well as turbocharged or supercharged, operating under moderate to heavy duty condition.

JCB HP 20W50 is used as engine lubricant in off highway/ construction applications, commercial vehicles, buses or military equipment, when one or more of the following specifications below are used to describe the required lubricant quality.

**JCB STANDARD:**  
4001/1900

**BENEFITS**

- An excellent value for money multi-purpose engine oil.
- Ideal universal mixed fleet engine lubricant.
- Universal engine/transmission lubricants for buses and off-highway or military equipment.
- Reduces handling and storage costs (one oil for many applications).
- Helps protect against cam wear.
- Provides good lubrication after cold starting thus limiting engine wear.
- Prohibits corrosion and Protects against rust.

**PERFORMANCE CLASSIFICATION**

API CF-4 / CF / SG. ACEA A2, B2, E2.

**MANUFACTURERS' STANDARDS**

MIL-L-46152C. MIL-L-2104C. CCMC G2, PD1, D2. MAN 270 (diesel engines, normal drain). Mercedes-Benz page 227.0 (diesel engine, normal drain). ZF TE-ML 03 (converter transmissions in mobile equipment). Allison C-3 (automatic transmissions). Caterpillar TO-2 (transmissions). Clark Form TLC-25 3M 8-83 (power shifted transmissions, torque converters). DANA Spicer Bulletin 2508-9 (mechanical transmissions, auxiliaries, transfer cases). Eaton/Fuller Bulletin 2052 (twin countershaft transmissions). Voith (retarder).

Description	Pack Size	Part Number
JCB Engine Oil HP 20W50	20L	4001/1905
JCB Engine Oil HP 20W50	200L	4001/1903

**JCB ENGINE OIL HP SAE30**

A versatile, high performance engine oil for diesel engines in commercial vehicles and plant operating under moderate and heavy conditions, where a monograde oil is prescribed or preferred. JCB Engine Oil HP SAE 30 can also be used as a gear, transmission or hydraulic lubricant. Its excellent anti-sludge and detergent/dispersant properties keep the engine clean and deposit free.

**JCB STANDARD:**  
4001/0300

**BENEFITS**

- An excellent value for money multi-purpose engine oil.
- Good anti-wear performance in both engine and transmissions.
- Excellent detergent/dispersant gives freedom from deposits and sludge.
- Ideal universal mixed fleet engine lubricant.
- Reduces handling and storage costs and avoids use of wrong oil (one oil for many applications).
- Helps protect against cam wear.
- Helps prevent corrosion and rust.

**PERFORMANCE CLASSIFICATION**

API CD / SF / CDII.

**MANUFACTURERS' STANDARDS**

MIL-L-46152E. MIL-L-2104E. MAN 271 (diesel engines, normal drain). Mercedes-Benz page 228.1 and 229.1 (diesel and gasoline engines). Volkswagen TL-VW 501.01, 505.00. Volvo VDS (diesel engines). Scania Diesel engines. Ford ESE-M2C153-E (service fill SG/CD). RVI SHPD (Heavy Duty Diesel Engines) E2-R. General Motors GM 6094M (service fill SG/CD). Allison C-4 (automatic transmissions). Caterpillar TO-2 (transmissions). Voith selected transmissions. ZF TE-ML 04C, 07.

Description	Pack Size	Part Number
JCB Engine Oil HP SAE30	4x5L	4001/0302
JCB Engine Oil HP SAE30	20L	4001/0305
JCB Engine Oil HP SAE30	200L	4001/0301

# ENGINE OIL.



### JCB ENGINE OIL FE 5W30

Able to operate down to -30 degrees centigrade JCB recommended this engine oil for extreme cold climatic conditions.

In addition this fuel saving heavy duty diesel engine oil is specially recommended for high performance Euro 4/5 diesel engines. JCB FE 5W30 can also be used in other HD diesel engines of commercial vehicles and off-highway equipment which are normally aspirated, turbocharged or supercharged. This oil can also be applied in retarders.

**JCB STANDARD:**  
4001/3300

**NB:** Not recommended for either gasoline engines or diesel engines requiring low ash products.

#### BENEFITS

- Superb protection against bore polishing.
- Provides excellent engine cleanliness.
- Can offer reduced fuel consumption.
- Avoids the deposition of sludge due to combustion soot.
- Protects against cylinder and cam wear.
- Provides quick lubrication after cold starting thus limiting engine wear.
- Reduces downtime and maintenance and fuel costs.
- Prohibits rust, corrosion and excessive foaming.

#### PERFORMANCE CLASSIFICATION

ACEA E4, E7.

#### MANUFACTURERS' STANDARDS

MB 228.5, MAN M 3277, Volvo VDS-3, Scania LDF, Renault RXD, DAF HPI, HP2, MTU Type 3, Mack EO-M Plus, Cummins CES 20077, -76, 72, -71, Voith Oil Class B, MB 235.28 (retarder).

Description	Pack Size	Part Number
JCB Engine Oil FE 5W30	4x5L	4001/3301
JCB Engine Oil FE 5W30	20L	4001/3305
JCB Engine Oil FE 5W30	200L	4001/3303
JCB Engine Oil FE 5W30	1,000L - IBC	4001/3345
JCB Engine Oil FE 5W30	Bulk Pump off	On request



### JCB UNIVERSAL AGRICULTURAL OIL

A truly multipurpose oil which is suitable for naturally aspirated, turbocharged engines, transmissions (including wet brake systems) and hydraulics.

JCB Universal Agricultural Oil can also be used in power steering and power take-offs where an engine oil is specified. This SAE 10W30 viscosity product has good fluidity, ensuring easy starting and rapid hydraulic response even in the most severe weather conditions.

**JCB STANDARD:**  
4004/0300

#### BENEFITS

- Truly universal application oil.
- Suitable for engines, transmissions and hydraulic systems.
- Excellent fluidity, ensuring easy starting and rapid hydraulic response.
- Rationalisation reduces storage and handling costs and eliminates risk of incorrect application.
- Excellent wear rate protection extends engine and component life.
- Can be used for power steering and PTOs where an engine oil is specified.

#### PERFORMANCE CLASSIFICATION

API CF-4 / SF, API GL-4.

#### MANUFACTURERS' STANDARDS

Case MS 1118 MS 1209, Ford ESN-M2C-41-B, -121-E, -134-C, -159-C, Massey Ferguson CMS M1127, 1135, 1139, 1141, 1144, Caterpillar TO-2, Allison C-4, New Holland NH 024C, 324B, 410B, ZF TE-ML 06 B, 07 B.

Description	Pack Size	Part Number
JCB Universal Agricultural Oil	20L	4004/0305
JCB Universal Agricultural Oil	200L	4004/0302
JCB Universal Agricultural Oil	1,000L - IBC	4004/0345
JCB Universal Agricultural Oil	Bulk Pump off	4004/0315



## JCB MACHINE ENGINE OIL SPECIFICATION BY EMISSIONS LEVEL, ENGINE RATING AND TEMPERATURE RANGE.

	Emissions Level	Engine Rating	Ambient Temperature (°C)						20L Part No.
			-30	-20	-15	0	+30	+40	
JCB Dieselmax	Tier 2 & Tier 3	All	15W40 4001/1800 API Spec: CH-4						4001/1805
			5W40 4001/2700 API Spec: CH-4						4001/2705
JCB Ecomax	Tier 4 Interim	All 55kW (No aftertreatment)	5W40 4001/2700 API Spec: CH-4						4001/2705
			5W40 4001/3400 API Spec: CJ-4 (North America Only)						4001/3405
	Tier 4 Final	68kW +	5W30 4001/3100 API Spec: CJ-4						4001/3105
			10W30 4001/3000 API Spec: CJ-4						4001/3005
Isuzu	Tier 2 & Tier 3	All	15W40 4001/1800 API Spec: CH-4						4001/1805
	Tier 4 Interim & Tier 4 Final	All	10W30 4001/1700 API Spec: CH-4						4001/1705
Cummins	Tier 2 & Tier 3	All	15W40 4001/2900 API Spec: CJ-4						4001/2905
			10W30 4001/3000 API Spec: CJ-4						4001/3005
	Tier 4 Interim & Tier 4 Final	All	5W40 4001/2700 API Spec: CH-4						4001/2705
			15W40 4001/1800 API Spec: CH-4						4001/1805
Kohler / Lombardini	Tier 2 & Tier 3	All	10W30 4001/1700 API Spec: CH-4						4001/1705
	Tier 4 Interim & Tier 4 Final	All	10W30 4001/3000 API Spec: CJ-4						4001/3005
Sisu	All	All	5W30 4001/3100 API Spec: CJ-4						4001/3105
			15W40 4001/2900 API Spec: CJ-4						4001/2905
MTU	All	All	10W30 4001/3000 API Spec: CJ-4						4001/3005
			15W40 4001/2900 API Spec: CJ-4						4001/2905
Perkins	Tier 2 & Tier 3	All	15W40 4001/1800 API Spec: CH-4						4001/1805
			5W40 4001/2700 API Spec: CH-4						4001/2705

Check Operator Handbook/Manual for full details. 02/15.



## GEAR OIL.

### GENUINE JCB GEAR OILS OFFER IMPROVED PERFORMANCE AND HIGH LEVELS OF WEAR PROTECTION. THEY ARE SUITABLE FOR A WIDE RANGE OF APPLICATIONS.

#### Gear and Transmission oil testing

JCB gear and transmission oils undertake a rigorous programme of testing to ensure that they provide the maximum performance and protection for your JCB machine and its gear and transmission systems.

JCB Engineering standards lay down performance levels and criteria for JCB Gear and Transmission oil which EXCEED OIL INDUSTRY STANDARDS. The Copper Strip Test is just an example of how JCB Gear and Transmission oils outperform other gear and transmission fluids that claim to be the same.

#### Copper strip test:

The presence of water within oil can cause corrosion, subsequent premature wear and tear or even failure of gears and transmissions.

An industry standard test is the copper strip test to identify the presence of water within oil. While some water presence is allowed, as you can see from the discolouring on the copper strip below, poor quality low cost oils will accept a greater presence of water than JCB oils.



**COPPER TEST**

Choosing anything else but the approved JCB oil is a false economy which can lead to inefficient machine operation, component wear and ultimately premature component failure.

In this test the JCB product clearly outperformed the low cost alternative.



**JCB STANDARD:  
4000/3700**

#### JCB GEAR OIL OP

JCB Optimum Performance Gear Oil has been specially developed as a universal gear oil to satisfy both the drum and gear lubrication requirements of the JCB Vibromax range of machines.

#### BENEFITS

- Fully synthetic yet also compatible with mineral oil products.
- Energy saving characteristics through friction reduction.
- Outstanding low temperature start ability.
- Reduced wear under boundary lubrication conditions.
- JCB OP Gear oil exceeds current standards for gear lubricants, and provides highest obtainable performance in the grey staining test.
- JCB OP Gear oil is approved by Jähnel-Kestermann for industrial gear and windturbine gear applications.
- JCB OP Gear oil is approved by Rexroth Bosch Group (Lohmann & Stolherft).

#### PERFORMANCE CLASSIFICATION

DIN 51517. CATEGORY CLP (1989).

#### MANUFACTURERS' STANDARDS

ISO 12925-1. Type CKC-CKD. AGMA 9005-D94 (5EP, 6EP & 7EP). Jähnel-Kestermann Getriebewerke GmbH & Co. KG.

Description	Pack Size	Part Number
JCB Gear Oil OP	4x5L	4000/3701
JCB Gear Oil OP	20L	4000/3705
JCB Gear Oil OP	200L	4000/3703
JCB Gear Oil OP	1,000L - IBC	4000/3745
JCB Gear Oil OP	Bulk Pump off	On request



**JCB STANDARD:  
4004/5100**

#### JCB GEAR OIL EP 80W90

A heavy duty multigrade gear lubricant, suitable for use in gearboxes and final drives where special anti-wear protection is required. The high quality additive package and unique base oils protect against rust and corrosion, extending component life. This oil is particularly suited for hypoid and spiral bevel type gears in commercial vehicles, off-highway equipment and passenger cars operating in moderate to heavy conditions.

#### BENEFITS

- Extends drive-train component life.
- Excellent protection against wear and scoring even under heavy duty conditions.
- Formulated to prevent oil breakdown.
- Protects against rust and corrosion.
- Very shear stable formulation.
- Proven oxidation stability.
- Compatible with most seal materials.

#### PERFORMANCE CLASSIFICATION

API GL-5. MIL-L-2105D (MULTI- GRADES). BRITISH MINISTRY OF DEFENCE CS 3000B.

#### MANUFACTURERS' STANDARDS

Jl Case MS 1316. Clark MS-8 Rev.1. Clark Form No. ALC-1 5M 7-80 KE. TLC-25 3M 8-83. John Deere JDM J11D/E. Eaton Bulletin 2053, 6007. Eaton/Fuller Bulletin 2052. Ford SM-2C-1011A SQM- 2C9002-AA. Fuller Form 121. General Motors Pt. no. 88 63 370, 85 476. Komatsu Dresser B22-0003, B22-0005. MAN 342. Mercedes-Benz page 235.0. Rockwell International 0-76. VME Americas EEMS 19003F. Volvo 97310. ZF TE-ML 01. ZF TE-ML 05. ZF TE-ML 07. ZF TE-ML 12A.

Description	Pack Size	Part Number
JCB Gear Oil EP 80W90	1L	4004/5104
JCB Gear Oil EP 80W90	20L	4004/5105
JCB Gear Oil EP 80W90	200L	4004/5103



**JCB STANDARD:  
4000/0600**

#### JCB GEAR OIL EP 85W140

A heavy duty multigrade gear lubricant, suitable for use in gearboxes and final drives, where special anti-wear protection is required. The high quality additive package and unique base oils protect against rust and corrosion, extending component life. Particularly suited for hypoid and spiral bevel type gears in commercial vehicles, off-highway equipment and passenger cars operating in moderate to heavy conditions.

#### BENEFITS

- Protects against rust and corrosion.
- Very shear stable formulation.
- Proven oxidation stability.
- Compatible with seal materials.
- Extends drive-train component life.
- Good protection against wear and scoring even under heavy duty and shock loading conditions.
- High resistance to thermal and chemical degradation.

#### PERFORMANCE CLASSIFICATION

API GL-5.

#### MANUFACTURERS' STANDARDS

MIL-L-2105D. British Ministry of Defence CS 3000B. Jl Case MS 1316. Clark MS-8 Rev.1 (axles). Clark Form No. ALC-1 5M 7-80 KE. TLC-25 3M 8-83. John Deere JDM J11D/E. Eaton Bulletin 2053, 6007. Eaton/Fuller Bulletin 2052. Ford SM-2C-1011-A, SQM-2C-9002-AA. Fuller Form 121. General Motors Pt. no. 88 63 370, 85 476. Komatsu Dresser B22-0003, B22-0005. MAN 342. Mercedes-Benz page 235.0. Rockwell International 0-76. VME Americas EEMS 19003F. Volvo 97310, 97316. ZF TE-ML 05A, 07A, 12A, 16B/C/D, 17B, 19B, 21A.

Description	Pack Size	Part Number
JCB Gear Oil EP 85W140	20L	4000/0605
JCB Gear Oil EP 85W140	200L	4000/0603
JCB Gear Oil EP 85W140	1,000L - IBC	4000/0645
JCB Gear Oil EP 85W140	Bulk Pump off	4000/0615



**JCB STANDARD:  
4000/3900**

#### JCB GEAR OIL LS PLUS

An SAE 80W90 multipurpose limited slip gear oil designed for use in hypoid gears, axles and final drives. It is especially suited for those with wet brake plates and limited slip (LS) differentials. This oil also offers reduced 'Brake Chatter' and improved mechanical transmission component life along with excellent extreme pressure protection. JCB Gear Oil LS Plus can be used for both on and off-highway equipment.

#### BENEFITS

- GL-5 gear oil performance in combination with wet brake and limited slip differential capabilities offering excellent wear protection.
- Excellent dynamic braking performance for smooth and safe brake operation.
- Significant reduction in brake chatter improving mechanical transmission component life.
- Excellent extreme pressure protection.
- Can be used in on LSD applications.
- Compatible with seal materials.

#### PERFORMANCE CLASSIFICATION

API GL-5.

#### MANUFACTURERS' STANDARDS

JDQ-96 (JD J20C).

Description	Pack Size	Part Number
JCB Gear Oil LS Plus	4x5L	4000/3901
JCB Gear Oil LS Plus	20L	4000/3905
JCB Gear Oil LS Plus	200L	4000/3903
JCB Gear Oil LS Plus	1,000L - IBC	4000/3945
JCB Gear Oil LS Plus	Bulk Pump off	On request

# GEAR OIL.



## JCB GEAR OIL HP

A highly refined paraffinic mineral oil, containing extreme pressure additives and friction modifiers, suitable for a wide range of applications including: axles, oil-immersed brakes, clutches, transmissions and hydraulics.

**JCB STANDARD:**  
4000/0500

### BENEFITS

- Provides excellent drive-line lubrication.
- Optimal friction characteristics for wet brakes.
- Avoids IPTO clutch slippage and reduces wet brake noise.
- Suitable for tractor hydraulic systems.
- Excellent viscosity stability between services.
- Provides good transmission lubrication.
- Prevents equipment component corrosion.
- Contains effective anti-foam agent.

### PERFORMANCE CLASSIFICATION

API GL-4.

### MANUFACTURERS' STANDARDS

Case MS 1209 (Hy-Tran Plus, transmissions, hydraulics, wet brakes). Case UK/David Brown. John Deere JDM J20C. Fiat AF 87. Ford New Holland. ESEN-M2C86-B. Komatsu Dresser B06-0002. Landini UTTO. Massey Ferguson CMS M 1127, 1135, 1141. SAME UTTO (past 1981 models). Valmet/Volvo BM UTTO (transmissions, hydraulics). Allison C-3 (automatic transmissions). Caterpillar TO-2 (transmissions).

Description	Pack Size	Part Number
JCB Gear Oil HP	20L	4000/0505
JCB Gear Oil HP	200L	4000/0503



## JCB GEAR OIL HP PLUS

A high performance gear oil specifically developed for the JCB axle and transmission, no other product will provide the chatter control and brake performance in the JCB manufactured powertrain that JCB Gear Oil Plus will. Its unique enhanced viscosity stability provides consistent protection throughout its prescribed service interval. In addition to ensuring excellent wear resistance for valves, pumps and gears, its unique JCB formulation offers outstanding squawk and chatter control in oil immersed brake systems.

**JCB STANDARD:**  
4000/2200

### BENEFITS

- JCB Gear Oil HP Plus has been designed and developed specifically to provide optimum performance of the wet brake mechanism incorporated into the axle/transmission systems manufactured by JCB.
- Provides excellent chatter control, preventing brake noise in JCB axles.
- Provides smooth gear-changing, even in manual transmissions.
- Maintains braking efficiency in wet brake systems, with reduction in noise and friction plate wear.
- Extends equipment life by protecting against rust and corrosion.
- Contains rust and corrosion inhibitors.
- Contains a very effective anti-foam agent.
- Compatible with all conventional seal materials.

### PERFORMANCE CLASSIFICATION

JCB STANDARD: 4000/2200.

### MANUFACTURERS' STANDARDS

JCB Standard 400/2200 unique to JCB.

Description	Pack Size	Part Number
JCB Gear Oil HP Plus	4x5L	4000/2202
JCB Gear Oil HP Plus	20L	4000/2205
JCB Gear Oil HP Plus	200L	4000/2203
JCB Gear Oil HP Plus	1,000L - IBC	4000/2245
JCB Gear Oil HP Plus	Bulk Pump off	4000/2215



## JCB GEAR OIL HP 90

A heavy duty multipurpose gear oil, formulated for gear type transmissions, spiral bevelled and hypoid drive axles, operating within a very wide oil temperature range (up to 150°C) and worm gear final drives (up to 100°C). It contains extreme pressure additives to give high level wear protection under high speed, high torque and shock loading conditions.

**JCB STANDARD:**  
4000/0300

### BENEFITS

- Extends drive-train component life.
- Good protection against wear and scoring even under heavy duty and shock loading conditions.
- High resistance to thermal and chemical degradation during use.
- Protects against rust and corrosion.
- Very shear stable formulation.
- Proven oxidation stability.
- Compatible with seal materials.

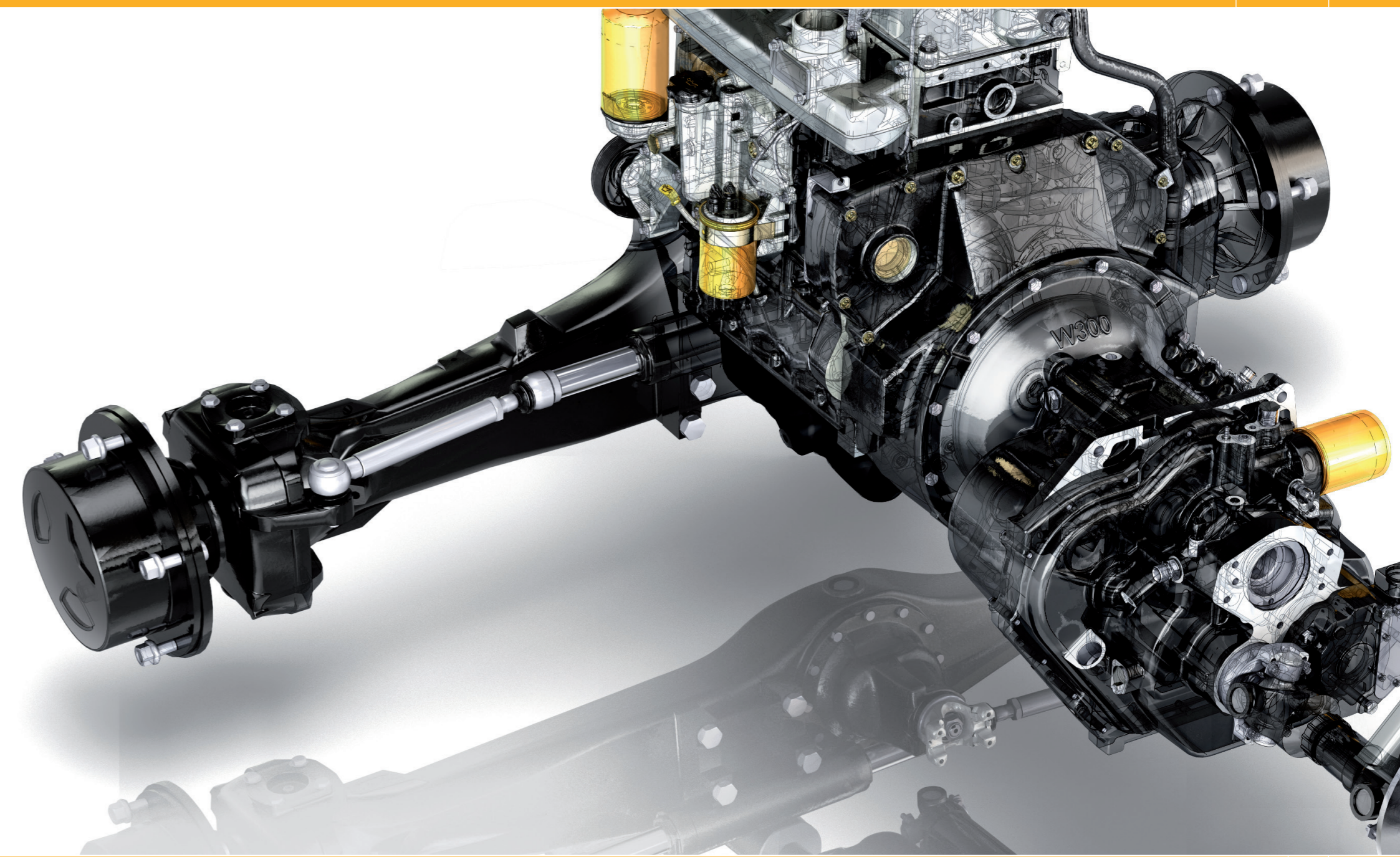
### PERFORMANCE CLASSIFICATION

API GL-5. MIL-L-2105B (MONOGRADES). BRITISH MINISTRY OF DEFENCE CS 3000B.

### MANUFACTURERS' STANDARDS

JI Case MS 1316. Clark MS-8 Rev.1. Clark Form No. ALC-1 5M 7-80 KE, TLC-25 3M 8-83. John Deere JDM J11D/E. Eaton Bulletin 2053, 6007. Eaton/Fuller Bulletin 2052. Ford SM-2C-101 IA SQM- 2C9002-AA. Fuller Form 121. General Motors Pt. no. 88 63 370, 85 476. Komatsu Dresser B22-0003, B22-0005. MAN 342. Mercedes-Benz page 235.0. Rockwell International 0-76. VME Americas EEMS 19003F. Volvo 97310. ZF TE- ML 01. ZF TE-ML 05. ZF TE-ML 07. ZF TE-ML 12A.

Description	Pack Size	Part Number
JCB Gear Oil HP 90	4x5L	4000/0301
JCB Gear Oil HP 90	20L	4000/0305
JCB Gear Oil HP 90	200L	4000/0303
JCB Gear Oil HP 90	1,000L - IBC	4000/0345
JCB Gear Oil HP 90	Bulk Pump off	4000/0315



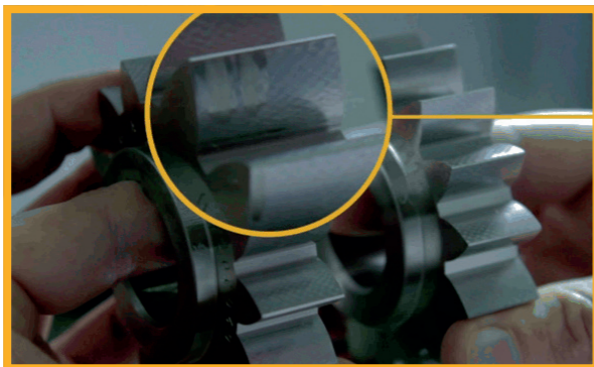
# TRANSMISSION FLUIDS.

**GENUINE JCB HIGH QUALITY TRANSMISSION FLUIDS GIVE HIGH LEVEL OF WEAR PROTECTION AND ARE SUITABLE FOR A WIDE RANGE OF APPLICATIONS.**

### Gear and Transmission oil testing

JCB gear and transmission oils undertake a rigorous programme of testing to ensure that they provide the maximum performance and protection for your JCB machine and its gear and transmission systems.

JCB Engineering standards lay down performance levels and criteria for JCB Gear and Transmission oil which EXCEED OIL INDUSTRY STANDARDS. Below is just an example of how wear and tear caused by poor quality oil can manifest itself.



**In tests the JCB product clearly outperformed the lower cost alternatives.**

**Choosing anything else but the approved JCB oil is a false economy which can lead to inefficient machine operation, component wear and ultimately premature component failure.**



**JCB STANDARD:  
4004/6300**

### JCB TRANSMISSION FLUID OP

A high quality transmission fluid uniquely designed for use on JCB Fastrac machines fitted with V-Tronic transmissions. Its universal properties make it suitable for use in engines, wet brake systems, final drives and hydraulic systems.

#### BENEFITS

- Suitable for diesel and gasoline engines fitted in tractors and off-highway/construction equipment.
- Avoids IPTO (independent power take off) clutch slippage.
- Limits wet brake noise, thus maintains brake capacity while limiting friction plate wear.
- Provides good transmission lubrication.
- Help prevent equipment component rust and corrosion.
- Low viscosity grade will provide quick response.

#### PERFORMANCE CLASSIFICATION

API CE / SF. API CF. API CG-4. ACEA E3. API GL-3 / GL-4.

#### MANUFACTURERS' STANDARDS

JCB FASTRAC (CVT). ZF TE-ML 06B, 06C. MB 227.1. AGCO CVT ML 200. Allison C4 (automatic transmissions). Massey Ferguson CMS M 1135, M 1139, M 1143, M 1144, M 1145. John Deere J20C & J27. Ford M2C134D, Ford M2C159B & M2C159C (Super Tractor Oil Universal). New Holland NH 030C, NH 024C, NH 410B & NH 420A. CNH MAT 3525, 3526.

Description	Pack Size	Part Number
JCB Transmission Fluid OP	20L	4004/6305



**JCB STANDARD:  
4000/2500**

### JCB TRANSMISSION FLUID EP 10W

A high quality transmission lubricant recommended for off-highway, construction and agricultural equipment. Its primary use is in powershift transmissions, final drives, hydrostatic transmissions, torque converters and hydraulic systems.

#### BENEFITS

- An excellent multi-purpose transmission fluid.
- Optimal friction characteristics even at low temperatures.
- Provides good wear protection also under heavy duty conditions.
- Gear protection, even under shock load conditions.
- Extends drive line component life.
- Protects against rust and prevents corrosion.
- Provides good transmission lubrication.

#### PERFORMANCE CLASSIFICATION

CATERPILLAR TO-4. ALLISON C-4.

#### MANUFACTURERS' STANDARDS

ZF TE-ML 03C. Komatsu Micro-Clutch. Eaton /Fuller (certain manual transmissions, see operating manual). DANA (certain manual transmissions, see operating manual).

Description	Pack Size	Part Number
JCB Transmission Fluid EP 10W	4x5L	4000/2501
JCB Transmission Fluid EP 10W	20L	4000/2505
JCB Transmission Fluid EP 10W	200L	4000/2503
JCB Transmission Fluid EP 10W	1,000L - IBC	4000/2545
JCB Transmission Fluid EP 10W	Bulk Pump off	4000/2515



**JCB STANDARD:  
4000/2600**

### JCB TRANSMISSION FLUID EP SAE 30

A high quality transmission lubricant recommended for off-highway, construction and agricultural equipment. Its primary use is in powershift transmissions, final drives, hydrostatic transmissions, torque converters and hydraulic systems.

#### BENEFITS

- An excellent multi-purpose transmission fluid.
- Optimal friction characteristics even at low temperatures.
- Provides good wear protection also under heavy duty conditions.
- Gear protection, even under shock load conditions.
- Designed to extend drive line component life.
- Protects against rust and prevents corrosion.
- Provides good transmission lubrication.

#### PERFORMANCE CLASSIFICATION

CATERPILLAR TO-4. ALLISON C-4.

#### MANUFACTURERS' STANDARDS

ZF TE-ML 03C. Komatsu Micro-Clutch. Eaton /Fuller (certain manual transmissions, see operating manual). DANA (certain manual transmissions, see operating manual).

Description	Pack Size	Part Number
JCB Transmission Fluid EP SAE 30	4x5L	4000/2601
JCB Transmission Fluid EP SAE 30	20L	4000/2605
JCB Transmission Fluid EP SAE 30	200L	4000/2603
JCB Transmission Fluid EP SAE 30	1,000L - IBC	4000/2645
JCB Transmission Fluid EP SAE 30	Bulk Pump off	On request



**JCB STANDARD:  
4000/0200**

### JCB TORQUE CONVERTOR FLUID

A versatile product, designed to cater for the needs of both engines and transmissions. It is ideal for use in high performance diesel engines where a monograde SAE 10W is required. Rationalisation benefits can be obtained by using it as a gear and transmission lubricant.

#### BENEFITS

- Excellent anti-wear performance in both engine and transmissions.
- Excellent detergent/dispersant gives freedom from deposits and sludge.
- Universal product to suit many applications, reducing handling and storage Costs, also reduces the possibility of using incorrect working oil.
- Helps prevent corrosion and rust.

#### PERFORMANCE CLASSIFICATION

API CD / SF / CDII.

#### MANUFACTURERS' STANDARDS

MIL-L-46152C. MIL-L-2104C. CCMC G2, PD1, D2. MAN 270 (diesel engines, normal drain). Mercedes-Benz page 227.0 (diesel engines, normal drain). ZF TE-ML 03 (converter transmissions in mobile equipment). Allison C-3 (automatic transmissions). Caterpillar TO-2 (transmissions). Clark Form TLC-25 3M 8-83 (power shifted transmissions, torque converters). DANA Spicer Bulletin 2508-9 (mechanical transmissions, auxiliaries, transfer cases). Eaton/Fuller Bulletin 2052 (twin countershaft transmissions). Voith (retarder).

Description	Pack Size	Part Number
JCB Torque Converter Fluid	4x5L	4000/0202
JCB Torque Converter Fluid	20L	4000/0205
JCB Torque Converter Fluid	200L	4000/0203
JCB Torque Converter Fluid	1,000L - IBC	4000/0245
JCB Torque Converter Fluid	Bulk Pump off	On request

# TRANSMISSION FLUIDS.



### JCB CLUTCH FLUID OP

A highly specialised fluid designed for use in JCB Fastrac V-Tronic clutch systems. This fluid is also suitable for power steering, rear axle steering, level control, hydro-pneumatic suspension, shock absorbers, stability and traction systems (ABS/ASR/ASC) and central locking systems. It can also perform in many specialist applications, such as electro-hydraulic cabriolet actuation systems.

**JCB STANDARD:**  
4002/1900

#### BENEFITS

- Designed for use in JCB Fastrac applications.
- A fully synthetic, optimum performance fluid.
- Designed to provide maximum performance throughout the service interval.
- Guaranteed performance at extreme temperatures (-40 deg C to 130 deg C).

#### PERFORMANCE CLASSIFICATION

DIN 51 524 T3. ISO 7308.

#### MANUFACTURERS' STANDARDS

Audi/VW TL 52 146.00. Ford Ford WSS-M2C204-A. MAN M 3289. MB 345.0. ZF TE-ML 02K. ISO 7308.

Description	Pack Size	Part Number
JCB Clutch Fluid OP	4x1L	4002/1904



### JCB HP UNIVERSAL ATF

A versatile product recommended for automatic transmissions and power steering systems, where Dexron IIE and III approved products are acceptable. It is suitable for a variety of applications including: trucks and off-highway equipment.

**JCB STANDARD:**  
4000/2300

#### BENEFITS

- Transmission life extended by wear protection.
- Immediate circulation in cold weather.
- Trouble free operation with smooth gear changing.
- Permits rationalisation, reducing product storage and handling costs and eliminates wrong ATF choice.
- Provides smooth power-steering operation.

#### PERFORMANCE CLASSIFICATION

DEXTON IIE AND III.

#### MANUFACTURERS' STANDARDS

Dexron ATF Type IIE, III. Ford Mercon M931004. Allison C-4, C4-18741793. Mercedes Benz 236.1, 236.5, 236.9, 236.10, 236.11, 236.12. MAN 339 type Z-1 and V-1. ZF TE-ML 02F, 03D, 04D, 11B, 14A, 17C.

Description	Pack Size	Part Number
JCB HP Universal ATF	4x5L	4000/2301
JCB HP Universal ATF	20L	4000/2305
JCB HP Universal ATF	200L	4000/2303



Depots at  
Altrincham  
Hereford  
Hilton  
Isle of Man  
Longridge  
Ruthin  
Shrewsbury  
Smethwick  
Stoke-on-Trent

## GREASE.

## JCB GREASES PROVIDE LONG LIFE PROTECTION TO HARD WORKING MACHINERY UNDER EXTREME CONDITIONS. THE COMPREHENSIVE RANGE OPTIMISES MAINTENANCE SCHEDULES HELPING TO REDUCE COSTS IN ALL APPLICATIONS.



### Grease testing

JCB grease undertakes a rigorous programme of testing to ensure it provides the maximum performance and protection for your JCB machine.

JCB Engineering standards lay down performance levels and criteria for JCB grease which EXCEED INDUSTRY STANDARDS. The Four Ball Weld Test is a typical example of how JCB Grease outperforms other grease that claim to be the same.

### Four ball weld test:

For this industry standard test grease is put under rotating speed and then a 450Kg load is applied. To pass the test the ball bearings have to last for 15 seconds before they 'fail' (seize) and weld together.

You can see below that the non JCB 'equivalent' grease fails immediately while the JCB HP Grease continues well past the required time. JCB grease is manufactured to provide significant load protection for your JCB and other off-highway machinery.



In this test the JCB product clearly outperformed both the low cost alternative and the industry standard requirement.

Choosing anything else but the approved JCB approved grease is a false economy which can lead to component wear and ultimately premature component failure.

### JCB SPECIAL HP GREASE

JCB Special HP Grease is a premium quality, extreme pressure grease, recommended for use in arduous operating conditions, such as high temperatures, excessive loading and extensive exposure to water. The sophisticated additive package combines with excellent adhesive properties to give high performance protection to hard working automotive, industrial, agricultural and earthmoving equipment, all year round.

<b>JCB STANDARD:</b>	<b>4003/2000</b>
<b>COLOUR:</b>	<b>BLUE</b>
<b>SOAP TYPE:</b>	<b>LITHIUM COMPLEX</b>
<b>NLGI:</b>	<b>2</b>
<b>DROP POINT (IP132):</b>	<b>245°C</b>
<b>WORKING TEMPERATURE RANGE:</b>	<b>-20°C TO 150°C</b>
<b>FOUR BALL WELD:</b>	<b>450KG</b>

Description	Pack Size	Part Number
JCB Special HP Grease	24x400g	4003/2017
JCB Special HP Grease	12.5Kg	4003/2006
JCB Special HP Grease	18Kg	4003/2009
JCB Special HP Grease	50Kg	4003/2005
JCB Special HP Grease	180Kg	4003/2008

### JCB SPECIAL MPL-EP GREASE

JCB Special MPL-EP Grease is a true multipurpose grease, recommended for a wide range of lubricating duties, such as pivot pins and wheel bearings, where excellent antiwear and antitrust performance is required. Its EP additive makes it particularly suitable for the shock load and vibrating conditions found on automotive, industrial, agricultural and earthmoving equipment.

<b>JCB STANDARD:</b>	<b>4003/1500</b>
<b>COLOUR:</b>	<b>BROWN</b>
<b>SOAP TYPE:</b>	<b>LITHIUM</b>
<b>NLGI:</b>	<b>2</b>
<b>DROP POINT (IP132):</b>	<b>180°C</b>
<b>WORKING TEMPERATURE RANGE:</b>	<b>-20°C TO 130°C</b>
<b>FOUR BALL WELD:</b>	<b>315KG</b>

Description	Pack Size	Part Number
JCB Special MPL-EP Grease	24x400g	4003/1501
JCB Special MPL-EP Grease	12.5Kg	4003/1506
JCB Special MPL-EP Grease	18Kg	4003/1508
JCB Special MPL-EP Grease	50Kg	4003/1510

### JCB EXTREME PERFORMANCE MOLY GREASE

JCB Extreme Performance Moly Grease is an advanced performance, multipurpose grease, recommended for heavily loaded bearing surfaces and in particular where limited or oscillating motion causes fretting. The addition of molybdenum disulphide provides extra protection against scoring and wear, making it ideal for automotive, industrial, agricultural and earthmoving equipment.

<b>JCB STANDARD:</b>	<b>4003/1300</b>
<b>COLOUR:</b>	<b>GREY BLACK</b>
<b>SOAP TYPE:</b>	<b>LITHIUM</b>
<b>NLGI:</b>	<b>2</b>
<b>DROP POINT (IP132):</b>	<b>185°C</b>
<b>WORKING TEMPERATURE RANGE:</b>	<b>-20°C TO 120°C</b>
<b>FOUR BALL WELD:</b>	<b>315KG</b>

Description	Pack Size	Part Number
JCB Extreme Performance Moly Grease	24x400g	4003/1327
JCB Extreme Performance Moly Grease	12.5Kg	4003/1326

### JCB EXTREME PERFORMANCE HAMMER GREASE

JCB Extreme Hammer Grease is a unique formulation aluminium complex grease for use where extremes of pressure and temperature are likely to be encountered. Particularly suited to hammer applications where resistance to water washing and migration may be critical.

<b>JCB STANDARD:</b>	<b>4003/2100</b>
<b>COLOUR:</b>	<b>BLACK</b>
<b>SOAP TYPE:</b>	<b>ALUMINIUM COMPLEX</b>
<b>NLGI:</b>	<b>2</b>
<b>DROP POINT (IP132):</b>	<b>250°C</b>
<b>WORKING TEMPERATURE RANGE:</b>	<b>-20°C TO 160°C</b>
<b>FOUR BALL WELD:</b>	<b>800KG</b>

Description	Pack Size	Part Number
JCB Extreme Performance Hammer Grease	24x400g	4003/2107
JCB Extreme Performance Hammer Grease	12.5Kg	4003/2106

### JCB SPECIAL SLIDE GREASE

JCB Special Slide Grease is formulated to provide excellent protection under heavy load and extreme pressure, where water and dirt are prevalent. It maintains a film of lubrication on slow moving slides by combining excellent resistance to squeeze out with superb corrosion resistance.

<b>JCB STANDARD:</b>	<b>4003/1100</b>
<b>COLOUR:</b>	<b>DARK GREY</b>
<b>SOAP TYPE:</b>	<b>LITHIUM</b>
<b>NLGI:</b>	<b>2</b>
<b>DROP POINT (IP132):</b>	<b>180°C</b>
<b>WORKING TEMPERATURE RANGE:</b>	<b>-20°C TO 120°C</b>
<b>FOUR BALL WELD:</b>	<b>700KG</b>

Description	Pack Size	Part Number
JCB Special Slide Grease	24x400g	4003/1115

### JCB SPECIAL HAMMER GREASE

JCB Special Hammer grease provides a highly effective lubricant on slow moving slides, along with an excellent corrosion resistant property. It combines the "self healing" action of oils with the resistance to drip of viscous compounds.

<b>JCB STANDARD:</b>	<b>4003/1100</b>
<b>COLOUR:</b>	<b>DARK GREY</b>
<b>SOAP TYPE:</b>	<b>LITHIUM</b>
<b>NLGI:</b>	<b>2</b>
<b>DROP POINT (IP132):</b>	<b>185°C</b>
<b>WORKING TEMPERATURE RANGE:</b>	<b>-15°C TO 120°C</b>
<b>FOUR BALL WELD:</b>	<b>700KG</b>

Description	Pack Size	Part Number
JCB Special Hammer Grease	24x400g	4003/1119

### JCB AUTOGREASE

JCB AUTOGREASE is for use with the JCB AUTOGREASE system, used on JCB's large breaker range. This mineral oil based paste, containing an aluminium complex soap and solid lubricants, is suitable for use under water, or in high ambient temperatures. The specially designed cartridges screw into the AUTOGREASE system fitted to the breaker housing. The clear cartridge allows the operator to easily monitor the grease usage from within the cab.

<b>JCB STANDARD:</b>	<b>4003/2300</b>
<b>COLOUR:</b>	<b>BLACK</b>
<b>SOAP TYPE:</b>	<b>ALUMINIUM COMPLEX, SOLID LUBRICANTS</b>
<b>NLGI:</b>	<b>2</b>
<b>DROP POINT (IP132):</b>	<b>260°C</b>
<b>WORKING TEMPERATURE RANGE:</b>	<b>-20°C TO 110°C</b>
<b>FOUR BALL WELD:</b>	<b>345KG</b>

Description	Pack Size	Part Number
JCB Autogrease	30x500g	4003/2305

### JCB SPECIAL SLEW PINION GREASE

JCB Special Slew Pinion Grease is a soft, black, tenacious grease designed specifically for the lubrication of large and heavy-duty open gears. Excellent corrosion protection and load carrying properties throughout a large temperature range.

<b>JCB STANDARD:</b>	<b>4003/1619</b>
<b>COLOUR:</b>	<b>BLACK</b>
<b>SOAP TYPE:</b>	<b>ORGANICALLY MODIFIED CLAY</b>
<b>NLGI:</b>	<b>2</b>
<b>DROP POINT (IP132):</b>	<b>N/A</b>
<b>WORKING TEMPERATURE RANGE:</b>	<b>-40°C TO 100°C</b>

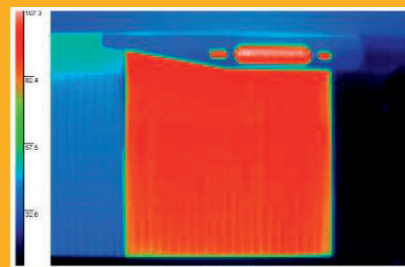
Description	Pack Size	Part Number
JCB Autogrease	24x500g	4003/1619

# ANCILLARY PRODUCTS.

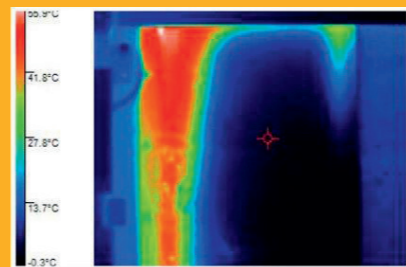
COMPREHENSIVE SELECTION OF GENUINE JCB APPROVED LUBRICANT RELATED PRODUCTS IS AVAILABLE FROM YOUR LOCAL JCB DEALER FOR ALL APPLICATIONS.



## JCB ANTIFREEZE/COOLANT



THERMAL IMAGE OF RADIATOR OPERATING EFFICIENTLY USING JCB COOLANT.



THERMAL IMAGE OF BLOCKED RADIATOR USING NON JCB APPROVED COOLANT.

## JCB ADBLUE

JCB as part of its strategy to meet Stage IV/Tier4 Final emissions legislation is introducing a Selective Catalytic Reduction (SCR) system on its 56kW to 129kW range of 4 cylinder Ecomax engines, for regions where this legislation is applicable.

As a consequence of this Ecomax strategy JCB Mid-range machines will have an AdBlue tank that requires filling with good quality, clean AdBlue. This is in addition to the JCB Fastrac and JCB 457 machines

As a result JCB Service has introduced the following range of AdBlue pack sizes to service this ever increasing demand:

Description	Pack Size	Part Number
JCB AdBlue	10L	4007/1009
JCB AdBlue	18L	4007/1008
JCB AdBlue	200L	4007/1003
JCB AdBlue	1,000L - IBC	ON REQUEST



JCB STANDARD: 4007/1000

## JCB ANTIFREEZE HP/COOLANT

An ethylene glycol based engine coolant concentrate, tested and proven in heavy duty applications, using established inhibitor technology, it is phosphate and amine free. The sophisticated silicate stabilisation technology eliminates the formulation of silica gel, whilst other additives ensure excellent compatibility with hard water, preventing the build-up of scale. Antifreeze and coolant used in JCB T2 and T3 machines must conform to ASTM D6210 standard.

### BENEFITS

- Manufactured to off highway standard ASTM D6210.
- Maximises engine performance.
- Superior freeze protect to -37°C (50% dilution).
- Guaranteed to be compatible with your JCB radiator and cooling pack.

### MANUFACTURERS' STANDARDS

ASTM D3306. ASTM D4985. ASTM D6210. SAE J1034. BS6580 (1992). AFNOR NF R15-601.



JCB STANDARD: 4006/1100

Description	Pack Size	Part Number
JCB Antifreeze HP / Coolant	4x5L	4006/1101
JCB Antifreeze HP / Coolant	20L	4006/1120
JCB Antifreeze HP / Coolant	200L	4006/1103

## JCB READYMIX (50/50) ANTIFREEZE HP/COOLANT

JCB 50/50 antifreeze and engine coolant is an ethylene glycol based solution which combines superior antifreeze and coolant technology with de-mineralised water to provide a quick, easy and efficient solution to your antifreeze and coolant requirements. Ideal in helping prevent the build up of scale where the quality of water supply cannot be guaranteed.

### MANUFACTURERS' STANDARDS

ASTM D3306. ASTM D4985. ASTM D6210. SAE J1034 3. BS6580 (1992). AFNOR NF R15-601.



JCB STANDARD: 4006/1100

Description	Pack Size	Part Number
JCB Readymix (50/50) Antifreeze HP / Coolant	4x5L	4006/1110
JCB Readymix (50/50) Antifreeze HP / Coolant	20L	4006/1115
JCB Readymix (50/50) Antifreeze HP / Coolant	200L	4006/1125

## JCB SPECIAL PLANTWASH

JCB Special Plantwash is formulated for use on all types of agricultural, commercial, industrial and earthmoving equipment. It removes dirt, oil, grease and traffic film economically, even when used in cold pressure washers.

### BENEFITS

- Biodegradable - exceeds EC Standard 82/242.
- Use via a hot (max. 60°C) or cold pressure washer.
- Can be applied at low pressure for traffic film removal.
- Can be used at high pressure for degreasing.



JCB STANDARD: 4006/2100

Description	Pack Size	Part Number
JCB Special Plantwash	20L	4006/2120
JCB Special Plantwash	200L	993/99174

## WAXOYL

Recommended for use on telescopic booms and extending dippers, this highly effective rustproof is suitable for all plant and machinery. Waxoyl expels moisture and forms a self healing skin to prevent rust formation.

### BENEFITS

- Excellent rust killer.
- Years of protection.
- Can be used to protect electrical systems from damp.



JCB STANDARD: 4004/0500

Description	Pack Size	Part Number
Waxoyl	5L	4004/0502
Waxoyl	6x400ml (Aerosol)	4004/0501A
Waxoyl	200L	4004/0505

# ANCILLARY PRODUCTS.



## JCB SCREENCLEAR

This multi purpose product can be used to de-ice when sprayed neat, or diluted and used as a screenwash.

### BENEFITS

- Protects down to -35°C.
- Removes traffic film, asphalt, oil and traces of insects.
- Does not harm paintwork or window rubbers.

**JCB STANDARD:**  
4006/0500

Description	Pack Size	Part Number
JCB Screenclear	12x1L	4006/0504



## JCB HIGH PERFORMANCE ANTI-SQUAWK FLUID

A performance supplement for gear oils designed to suppress brake chatter and squawk.

### BENEFITS

- Fully approved for use on JCB machines.
- Specially developed for machines fitted with oil immersed brakes.

**JCB STANDARD:**  
4004/3900

Description	Pack Size	Part Number
JCB High performance Anti-Squawk Fluid	4x1L	4004/3904



## JCB LIQUID MAINTENANCE

An ultrafine lubricant with a very high attraction to metal surfaces. Displaces and repels surface moisture and dust.

### BENEFITS

- Free seized bolts.
- Expel moisture from electrical components.
- Protect stored tools against corrosion.

**JCB STANDARD:**  
993/99000

Description	Pack Size	Part Number
JCB Liquid Maintenance	6x400ml	993/99166



## JCB GLASS CLEANER

Excellent glass cleaning formulation for the removal of grime, oily film and insect debris.

### BENEFITS

- Anti-smear formula.
- Effective on all reflective surfaces.
- Brilliant shine.

**JCB STANDARD:**  
4006/3100

Description	Pack Size	Part Number
JCB Glass Cleaner	6x750ml	4006/3175



## JCB HYDRAULIC ANTI-STICK ADDITIVE

JCB Anti Stick Additive is specially designed to relieve the 'stickslip' phenomena that can occur with most hydraulic systems. Its friction modifier properties are designed to aid the flow characteristics of the hydraulic system and help relieve the hydraulic cylinder noise that often accompanies 'stick slip'. It is designed for hydraulic systems only and should NOT be used in common hydraulic, brake and transmission systems.

**JCB STANDARD:**  
4004/6700

Description	Pack Size	Part Number
JCB Hydraulic Anti-stick Additive	1L	4004/6704



## JCB BRAKE DOT 4 FLUID

A performance supplement for gear oils designed to suppress brake chatter and squawk.

### BENEFITS

- Fully approved for use on JCB machines.
- Specially developed for machines fitted with oil immersed brakes.

**JCB STANDARD:**  
4002/0400

Description	Pack Size	Part Number
JCB Brake DOT 4 Fluid	12x1L	4002/0404



## JCB CHAIN LUBRICANT

A powerful blend of high penetration lubricant, dewatering agent and corrosion protector. Especially useful for open chain driven gears on agricultural machinery.

### BENEFITS

- Prolongs chain life by deep penetration into linkages.
- Reduces wear by repelling dirt.
- Highly effective lubricant and protector.

**JCB STANDARD:**  
4004/0200

Description	Pack Size	Part Number
JCB Chain Lubricant	1x300ml	4004/0237A



## JCB CLEANER DEGREASER

A general purpose solvent based parts cleaner.

### BENEFITS

- Removes most grease, oils and fines.
- Leaves no residue.
- Ideal for pre-bonding/sealing.

**JCB STANDARD:**  
4104/1500

Description	Pack Size	Part Number
JCB Cleaner Degreaser	12x400ml	4104/1557

# ACCESSORIES.



### GREASE GUN

- Designed to suit 400gm grease cartridges.

Description	Part Number
Grease Gun - Standard Grip (5 per pack)	992/11300
Grease Gun - Pistol Grip	992/11305



### 20L DRUM PUMP

- Suitable for use on a number of fluids.
- Suitable for oil.
- Suitable for AdBlue/DEF.

Description	Part Number
20/25ltr Pump	990/89707



### 200L BARREL PUMP - STEEL

- Steel Construction.
- Delivers high volume 2100 litres/hour (460 gallons/hour).
- Handles both diesel and oil from barrels.
- Hand operated, easy to use.
- Dual Thread.
- Not suitable for AdBlue/DEF.

Description	Part Number
200L Barrel Pump - Steel	990/89700



### 200L BARREL PUMP - PLASTIC

- Plastic 200l barrel pump.
- Complete with tube/spout.
- Suitable for use on a number of fluids.
- Suitable for AdBlue/DEF.

Description	Part Number
200L Barrel Pump - Plastic	990/89701



### ROTARY BARREL PUMP

- Capable of handling a wide variety of liquids.
- Will deliver and retrieve.
- Delivers up to 840 litres/hour.
- Not suitable for AdBlue/DEF.

Description	Part Number
Rotary Barrel Pump	990/89600

### IBC ADBLUE/DEF - ELECTRIC PUMP

- With flow meter.
- Complete with nozzle.



Part Number: 990/89703

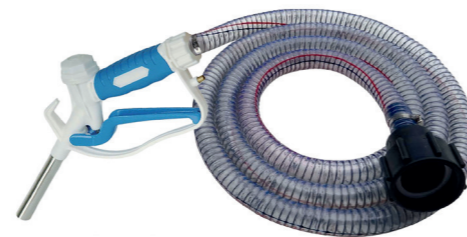


art Number: 990/89702

Description	Part Number
IBC AdBlue - Electric Pump complete with Standard Nozzle	990/89703
IBC AdBlue - Electric Pump complete with Magnetic Misfilling Nozzle	990/89702

### IBC ADBLUE/DEF - GRAVITY FED DISPENSER

- Connector.
- Nozzle.



Description	Part Number
IBC AdBlue - Gravity Fed Connector & Nozzle	990/89704



### GREASE PUMP

- Designed to suit 12.5kg and 18.5kg kegs.
- Complete with follower plate.

Description	Part Number
Grease Pump	993/79300



### SUBMERSIBLE REFUELLING PUMP KIT

- Delivers high volume 1090 litres/hour (240 gallons/hour).
- No effort involved - works from 12 volt battery.
- Handles both diesel and oil. Kit includes lead with crocodile clips, hose and plug for direct connection into beacon socket or protrusion plate light socket.
- NB: Not designed to run dry.

Description	Part Number
Submersible Refuelling Pump Kit	121/10400



### MEASURING JUGS

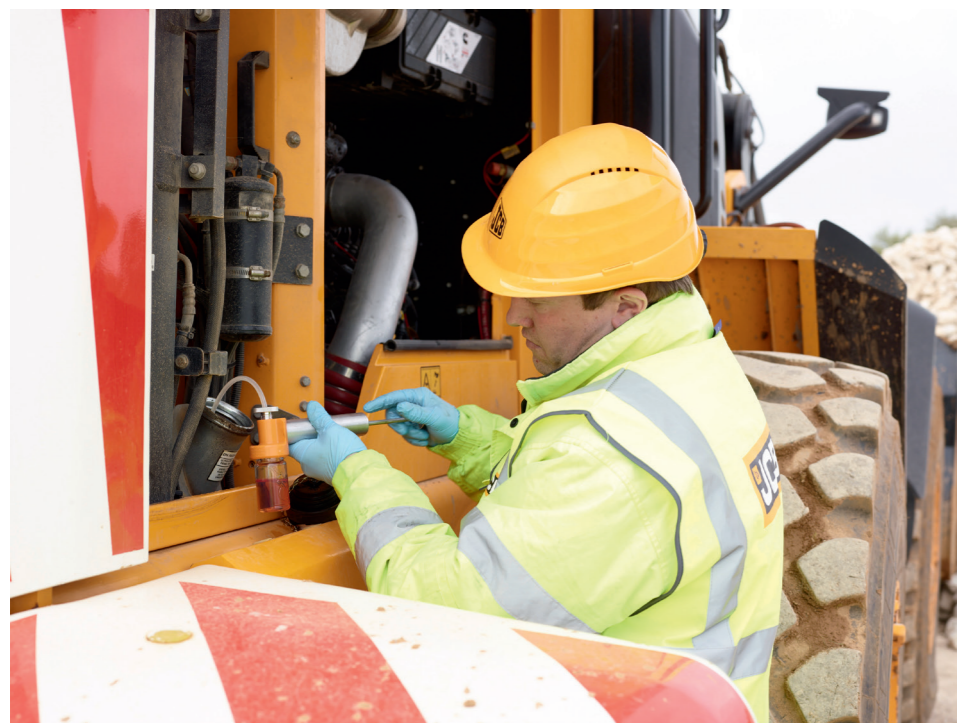
- Moulded in tough polythene.
- Unaffected by oil, petrol, diesel, paraffin, antifreeze, brake fluid, battery acid, etc.
- Easy measurement of oil.

Description	Part Number
Measuring Jug - 1.5ltr	990/89800
Measuring Jug - 5ltr	990/89900



## OIL AND DIESEL FUEL SAMPLING.

IN RESPONSE TO THE INCREASING NEED FOR OIL AND DIESEL FUEL ANALYSIS JCB SERVICE OFFERS A COMPREHENSIVE SAMPLING SERVICE TO JCB DEALERS AND JCB CUSTOMERS, IN ADDITION ONCE AN ACCOUNT HAS BEEN SET UP RESULTS CAN BE VIEWED ON LINE.



### Routine sampling and testing:

Use this analysis type for one off sample or long term health monitoring. Routine sampling during the servicing builds up an on-going picture of the oil in a component. Each sample includes a chart of the previous samples and highlights any abnormality observed. This gives an opportunity for proactive action to be taken in the event that a problem is highlighted before a component fails. Listed below are assemblies from which oil samples can be taken and monitored.

- Engines
- Hydraulics
- Transmissions
- Gearboxes
- Final Drives/hubs

### View results on-line

Once you receive your sampling pack, simply set-up and account with the sample company to enable you to view your results on-line.

### UK Part Numbers:

Description	Pack Size	Part Number
UK - Routine sample Oil or Diesel	1	998/10423
UK - Enhanced analysis Oil or Diesel	1	998/10001
UK - Comprehensive Diesel Fuel analysis to BS2869	1	998/10002
UK - Postage paid bag to send above samples back*	4	333/H9217
UK - Vacuum pump kit (To take samples)	1	998/10424

\*This is a postage paid bag that will ensure that Royal mail will carry the oil or fuel 'sample'.

### Non UK Part Numbers:

Description	Pack Size	Part Number
Non UK - Routine sample Oil or Diesel	1	998/10003
Non UK - Enhanced analysis Oil or Diesel	1	998/10004
Non UK - Comprehensive Diesel Fuel analysis to BS2869	1	998/10005
Non UK - Vacuum pump kit (To take samples)	1	998/10424

Non UK samples are to be sent direct from JCB Dealer or customer via a courier. See Techweb bulletin 6704 or MI 1136 for full details and shipping documentation.

### Non Routine sampling and testing:

This will assist with diagnostic activities and be used on the following:

- AdBlue
- Basic fuel testing
- Verification of engine oil testing
- Engine coolant test
- Other

### Comprehensive fuel testing:

Use this analysis type for depth testing of the diesel fuel where components have failed and a high level of data and supporting evidence is required. This test will determine whether the fuel meets BS2869:2010 specification.

## PAINT SELECTOR.

JCB OFFER YELLOW, BLACK AND GREY LEAD/CHROME FREE PAINT TO MATCH ALL JCB MACHINES. DETAILED BELOW ARE ALL THE PART NUMBERS YOU WILL NEED, AS THE RANGE JCB OFFER WILL MATCH ALL CURRENT MACHINES ELIMINATING THE COSTLY AND TIME CONSUMING ACTIVITY OF TRYING TO MATCH UP PAINTS LOCALLY WHICH MAY PROVE TO BE AN UNRELIABLE MATCH.

### SINGLE PACK: FOR 'REPAIR' OF DAMAGED PAINTWORK

Part Number	Description	Pack Type	Unit of Issue	Activator	Thinner (if required)
4220/0402	JCB Yellow Gloss	2.5L Tin	1 x 2.5L Tin	Not Applicable	White Spirit Based Thinner
4220/0406	JCB Yellow Gloss	Aerosol	12 x 400ml Aerosols	Not Applicable	Not Applicable
4221/5902	JCB Light Buff Undercoat/Primer	2.5L Tin	1 x 2.5L Tin	Not Applicable	White Spirit Based Thinner
4221/5906	JCB Light Buff Undercoat/Primer	Aerosol	12 x 400ml Aerosols	Not Applicable	Not Applicable
4200/4102	JCB Black 40% Semi Gloss	2.5L Tin	1 x 2.5L Tin	Not Applicable	White Spirit Based Thinner
990/00072	JCB Black 40% Semi Gloss	Aerosol	12 x 400ml Aerosols	Not Applicable	Not Applicable
990/00074	JCB Grey Primer	Aerosol	1 x 400ml Aerosol	Not Applicable	Not Applicable
4201/0546	JCB Storm Grey Single Pack	Aerosol	12 x 400ml Aerosol	Not Applicable	Not Applicable

### TWO PACK: FOR A 'PROFESSIONAL' FINISH

Part Number	Description	Pack Type	Unit of Issue	Activator	Thinner (if required)
4222/0602	JCB Yellow Gloss 2 Pack (Non ISO)	2.5L Tin	1 x 2.5L Tin	4209/1031 (Mix: 3 Base to 2 Activator)	4200/9203
4202/1532	JCB Black - 2 Pack	2.5L Tin	1 x 2.5L Tin	4209/1031 (Mix :3 Base to 2 Activator)	4200/9203

If your customer buys a NON JCB paint (Lead free or Lead containing) and applies it to a JCB machine – **IT MAY NOT BE A RELIABLE OR EXACT MATCH!**

The only way to guarantee a reliable match is to use JCB GENUINE PAINT - Namely the same source of paint as the original machine manufacture.

## THE RANGE.

JCB ENGINE OIL	1 Litre	4x5 Litre	20 Litre	200 Litre	IBC 1,000 Litre	Bulk 1,000 Litre (UK only)
JCB Engine Oil UP 10W30	-	4001/3001	4001/3005	4001/3003	4001/3045	-
JCB Engine Oil UP 15W40	-	4001/2901	4001/2905	4001/2903	4001/2945	-
JCB Engine Oil UP 5W30	-	4001/3101	4001/3105	4001/3103	4001/3145	-
JCB Engine Oil OP 15W40	-	4001/2801	4001/2805	4001/2803	4001/2845	-
JCB Engine Oil EP 15W40	-	4001/1801	4001/1805	4001/1803	4001/1845	4001/1815
JCB Engine Oil HP 15W40	-	4001/1501	4001/1505	4001/1503	4001/1545	4001/1515
JCB Engine Oil HP 20W50	-	-	4001/1905	4001/1903	-	-
JCB Engine Oil HP 10W30	-	4001/1701	4001/1705	4001/1703	4001/1745	-
JCB Engine Oil HP SAE30	-	4001/0302	4001/0305	4001/0301	-	-
JCB Engine Oil EP 5W40	-	4001/2701	4001/2705	4001/2703	4001/2745	-
JCB Engine Oil FE Cold Climate 5W30	-	4001/3301	4001/3305	4001/3303	4001/3345	-

JCB HYDRAULIC FLUID	1 Litre	4x5 Litre	20 Litre	200 Litre	IBC 1,000 Litre	Bulk 1,000 Litre (UK only)
JCB Hydraulic Fluid OP 46	-	4002/2001	4002/2005	4002/2003	4002/2045	-
JCB Hydraulic Fluid EP 46	-	-	4002/1605	4002/1603	4002/1645	4002/1615
JCB Hydraulic Fluid HP 46	-	4002/0801	4002/0805	4002/0803	4002/0845	4002/0815
JCB Hydraulic Fluid Biodegradable 46	-	-	4002/2605	4002/2603	4002/2645	-
JCB Hydraulic Fluid UP Cold Climate 32	-	-	4002/2805	4002/2803	-	-
JCB Hydraulic Fluid HP 32	-	4002/1001	4002/1025	4002/1024	4002/1045	4002/1015
JCB Hydraulic Fluid HP 15	4002/0501	4002/0503	-	-	-	-
JCB Hydraulic Fluid OP 68	-	4002/2701	4002/2705	4002/2703	4002/2745	-
JCB Hydraulic Fluid HP 68	-	-	4002/0705	4002/0701	-	-

JCB GEAR OIL	1 Litre	4x5 Litre	20 Litre	200 Litre	IBC 1,000 Litre	Bulk 1,000 Litre (UK only)
JCB Gear Oil OP	-	4000/3701	4000/3705	4000/3703	4000/3745	-
JCB Gear Oil EP 85W140	-	-	4000/0605	4000/0603	4000/0645	4000/0615
JCB Gear Oil EP 80W90	4004/5104	-	4004/5105	4004/5103	-	-
JCB Gear Oil HP	-	-	4000/0505	4000/0503	-	-
JCB Gear Oil HP Plus	-	4000/2202	4000/2205	4000/2203	4000/2245	4000/2215
JCB Gear Oil HP 90	-	4000/0301	4000/0305	4000/0303	4000/0345	4000/0315
JCB Gear Oil LS Plus	-	4000/3901	4000/3905	4000/3903	4000/3945	-

JCB TRANSMISSION FLUID	1 Litre	4x5 Litre	20 Litre	200 Litre	IBC 1,000 Litre	Bulk 1,000 Litre (UK only)
JCB Universal HP ATF	-	4000/2301	4000/2305	4000/2303	-	-
JCB Transmission Fluid EP 10W	-	4000/2501	4000/2505	4000/2503	4000/2545	-
JCB Transmission Fluid EP SAE30	-	4000/2601	4000/2605	4000/2603	4000/2645	-
JCB Torque Convertor Fluid	-	4000/0202	4000/0205	4000/0203	4000/0245	-
JCB Transmission Fluid OP	-	-	4004/6305	-	-	-
JCB Clutch Fluid OP 4002/1904	-	4002/1904	-	-	-	-

JCB UNIVERSAL TRACTOR OIL	1 Litre	4x5 Litre	20 Litre	200 Litre	IBC 1,000 Litre	Bulk 1,000 Litre (UK only)
JCB Universal Agricultural Oil	-	-	4004/0305	4004/0302	4004/0345	4004/0315

JCB GREASE	400g	500g	12.5kg	18kg	50kg	180kg
JCB Special HP Grease	4003/2017	-	4003/2006	4003/2009	4003/2005	4003/2008
JCB Special MPL-EP Grease	4003/1501	-	4003/1506	4003/1508	4003/1510	-
JCB Special Slew Pinion Grease	4003/1619	-	-	-	-	-
JCB Extreme Performance Moly Grease	4003/1327	-	4003/1326	-	-	-
JCB Special Slide Grease	4003/1115	-	-	-	-	-
JCB Special Hammer Grease	4003/1119	-	-	-	-	-
JCB Extreme Performance Hammer Grease	4003/2107	-	4003/2106	-	-	-
JCB Autogrease	-	4003/2305	-	-	-	-

JCB ANTIFREEZE	4x5 Litre	20 Litre	200 Litre	IBC 1,000 Litre
JCB Antifreeze HP / Coolant - Concentrate	4006/1101	4006/1120	4006/1103	-
JCB Antifreeze HP / Coolant - Readymix	4006/1110	4006/1115	4003/1125	-
JCB Si-OAT Antifreeze OP / Coolant - Readymix	4006/1305	-	-	-

JCB ANCILLIARIES	1 Litre	10 Litre	20 Litre	200 Litre	IBC 1,000 Litre
JCB AdBlue	-	4007/1009	4007/1008 (18L)	4007/1003	On Request
JCB Plantwash	-	-	4006/2120	993/99174	-
JCB Screenclear	4006/0504	-	-	-	-
JCB Hydraulic Anti-stick Additive	4004/6704	-	-	-	-
JCB High Performance Anti-Squawk Fluid	4004/3904	-	-	-	-
JCB Brake Dot 4 Fluid	4002/0404	-	-	-	-
JCB Glass Cleaner spray	4006/3175 (750ml)	-	-	-	-

JCB WORKSHOP AEROSOLS	400 ml
JCB Liquid Maintenance	993/99166
JCB Cleaner / Degreaser	4104/1557
JCB Penetrating Fluid + Graphite	891/04021
JCB Silicone Lubricant	891/04022
JCB Electrical Cleaner	891/04023
JCB Maintenance Spray	891/04024
JCB Wire Rope & Chain Lubricant	891/04025
JCB White Grease + PTFE	891/04026
JCB Cockpit Shine	891/04027
JCB Degreaser Spray	891/04029
Waxoyl	4004/0501A
JCB Chain Lubricant	4004/0237A (300ml)

JCB PAINT	400ml Aerosol (x12)	2.5 Litre	5 Litre
JCB Yellow Gloss	Single Pack 4220/0406	4220/0402	-
JCB Light buff undercoat/Primer	Single Pack 4221/5906	4221/5902	-
JCB Black 40% Semi gloss	Single Pack 990/00072	4200/4102	-
JCB Grey primer	Single Pack 990/00074 (x1)	-	-
JCB Storm Grey	Single Pack 4201/0546	-	-
JCB Yellow Gloss	Two Pack -	4222/0602	-
JCB Black	Two Pack -	4202/1532	-
Activator	Two Pack -	4209/1031	-
JCB Thinner	Two Pack -	-	4200/9203

\* For paint selection and application advice see 'Paint Selection' on page 33

OIL SAMPLING	UK	Non-UK
Routine Sample Oil or Diesel	998/10423	998/10003
Enhanced Analysis Oil or Diesel	998/10001	998/10004
Comprehensive Diesel Fuel Analysis to BS2869	998/10002	998/10005
Postage Paid Bag to Send Samples Back	333/H9217	N/A
Vacuum Pump to Take Samples	998/10424	998/10424



World Parts Centre, Beamhurst, Uttoxeter, Staffordshire ST14 5PA [www.jcb.com](http://www.jcb.com)